



# Alemtuzumab vs. Basiliximab based immunosuppression regime: Long term outcomes for Simultaneous Pancreas and Kidney (SPK) Transplantation

Kanwar A, Amer A, Bradish T, Thakkar R, Williams P, French J, Wilson C, Sen G, Talbot D, Manas D, White S  
Institute of Transplantation, Freeman Hospital, Newcastle Upon-Tyne, UK.

## INTRODUCTION

- Alemtuzumab - anti CD52 antibody - a potent lymphocyte depleting induction agent. It allows steroid avoidance which can be particularly favourable for Simultaneous Pancreas and Kidney (SPK) transplants.
- From March 2008 onwards - we introduced Alemtuzumab based regime for all our SPK patients (30 mgs subcutaneous on induction and 30 mgs 24-36 hours post transplant) followed by immunosuppression regime of Tacrolimus and MMF (from day 7) alone and No steroid.
- Prior to this, we used Basiliximab for induction (20 mgs intravenous on induction and on day 4) followed by a triple maintenance immunosuppression regime (CNI, MMF and steroids).
- We aimed to compare the 2 different regimes and assess long term outcomes.

## METHODS

- A retrospective analysis – (2003 – 2015)
- Information was gathered using electronic records and patient notes.
- Data was analysed using Microsoft Excel 2011 and SPSS 23.
- Fischer exact test was used to compare the groups.
- Kaplan Meier curves and survival estimates were calculated.

## RESULTS

### Basiliximab (n = 30)

- Mean recipient age 41 yrs (range 27-55 yrs)
- Males 11 / Females 19
- Mean donor age 36 yrs (range 15-55 yrs)

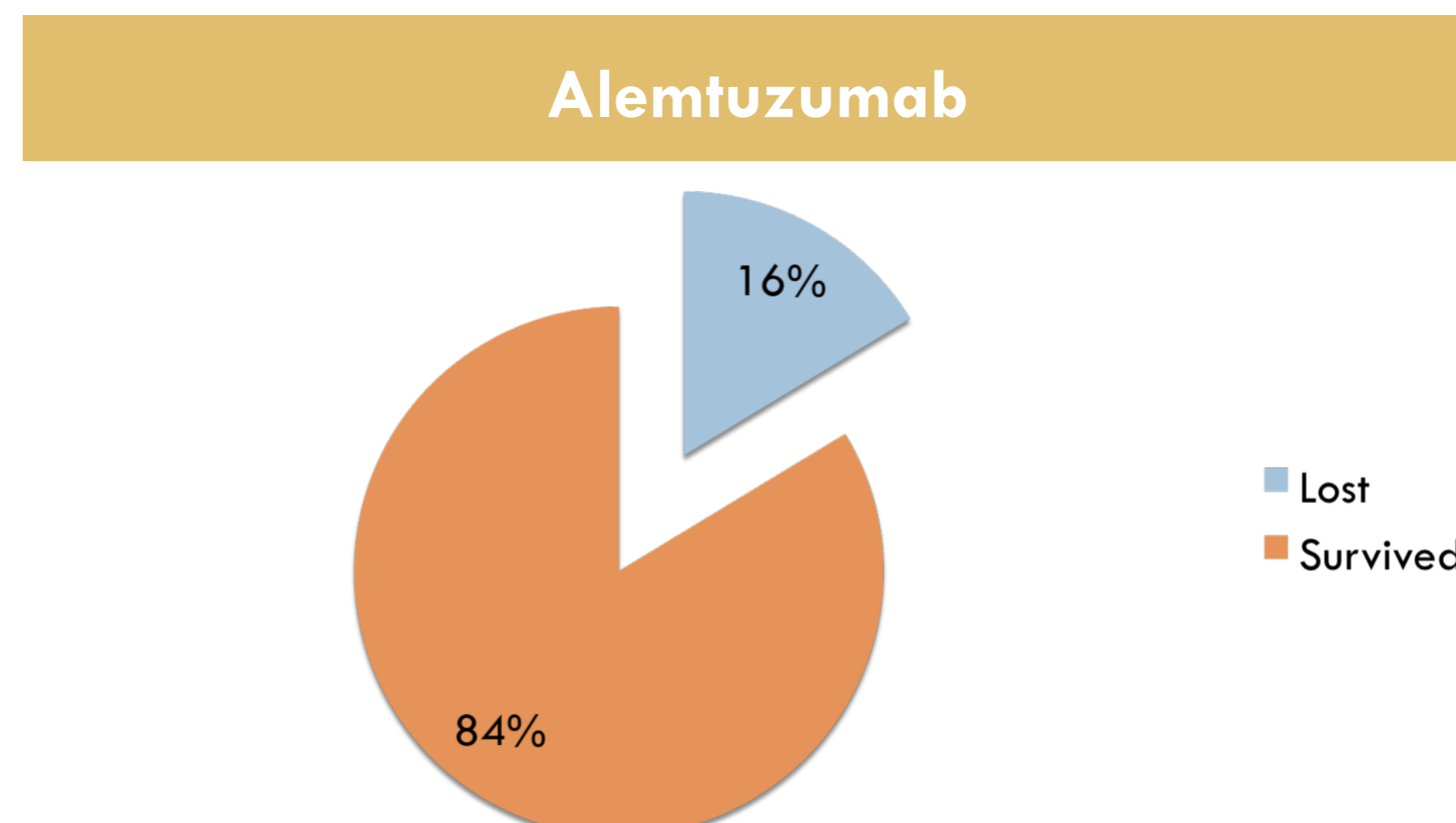
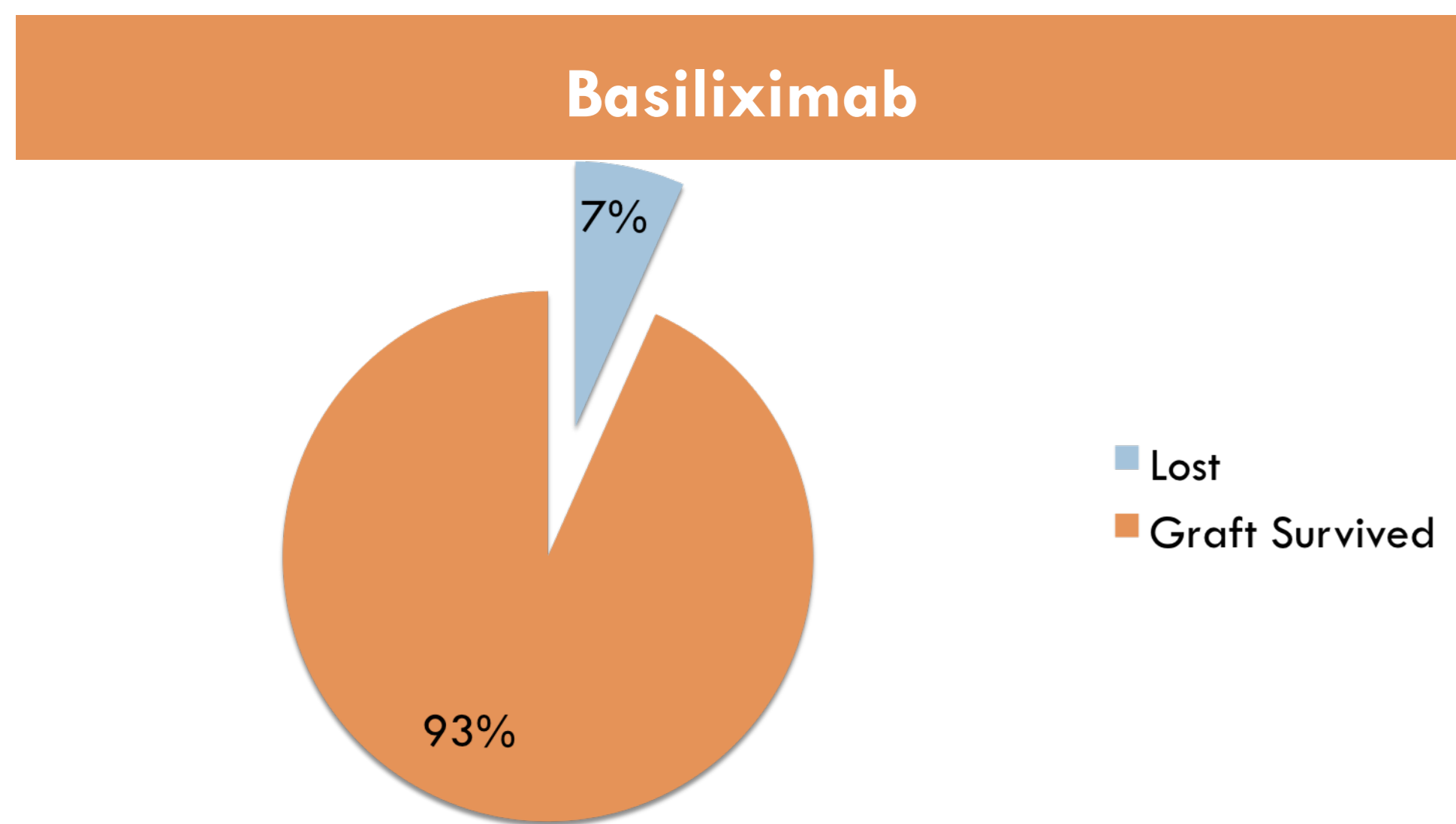
### Alemtuzumab (n = 49)

- Mean recipient age 42 yrs (range 27-60 yrs)
- Males 30 / Females 19
- Mean donor age 38 yrs (range 9-60)

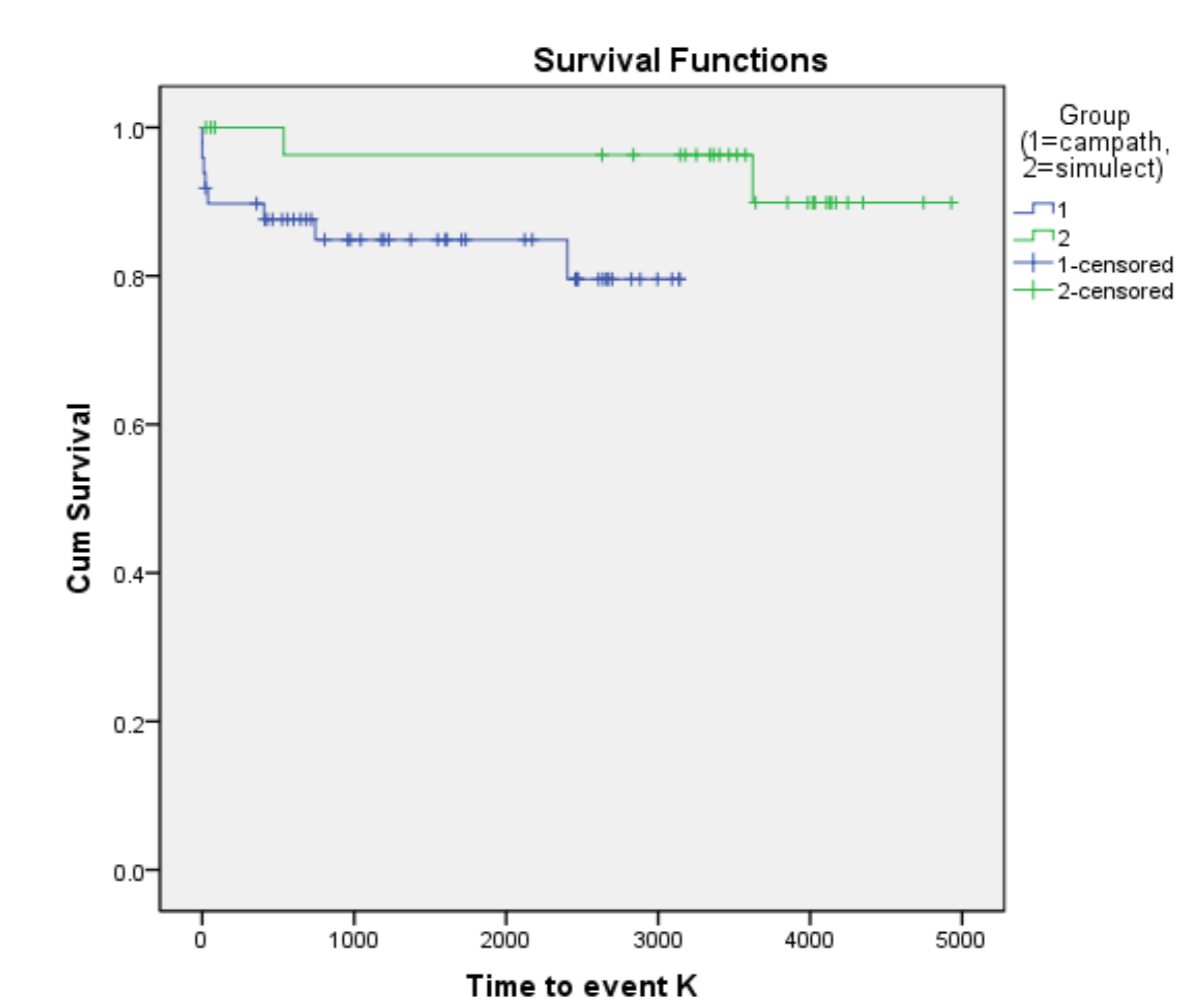
### Kaplan-Meier Survival Probability Estimates

		Year 1	Year 2	Year 3	Year 4	Year 5
Patient Survival	Alemtuzumab	0.96	0.96	0.93	0.93	0.90
	Basiliximab	0.90	0.90	0.90	0.90	0.90
Kidney Graft Survival	Alemtuzumab	0.90	0.88	0.85	0.85	0.85
	Basiliximab	1.00	0.97	0.97	0.97	0.97
Pancreas Graft Survival	Alemtuzumab	0.82	0.77	0.74	0.71	0.71
	Basiliximab	0.87	0.83	0.83	0.80	0.69

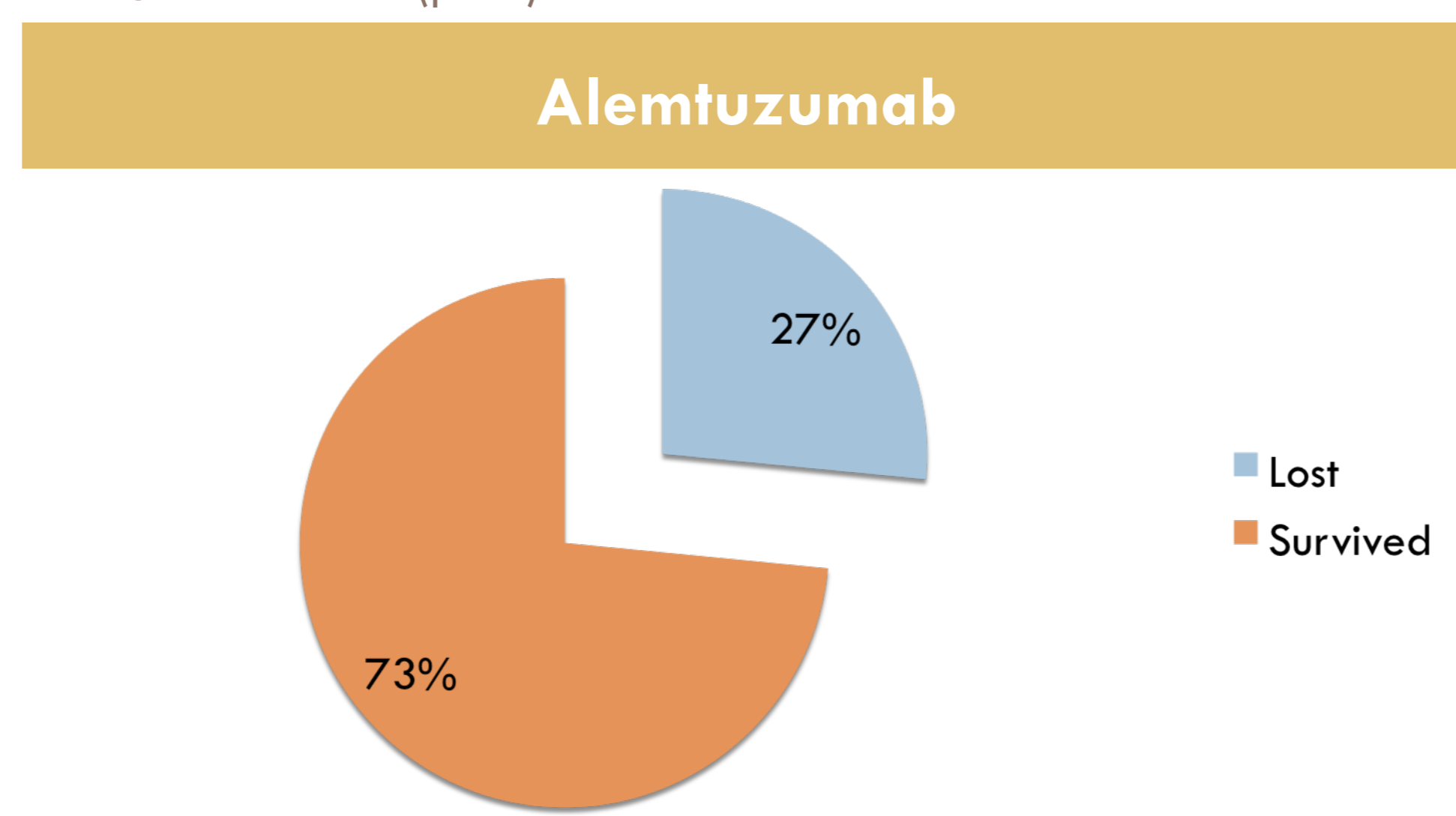
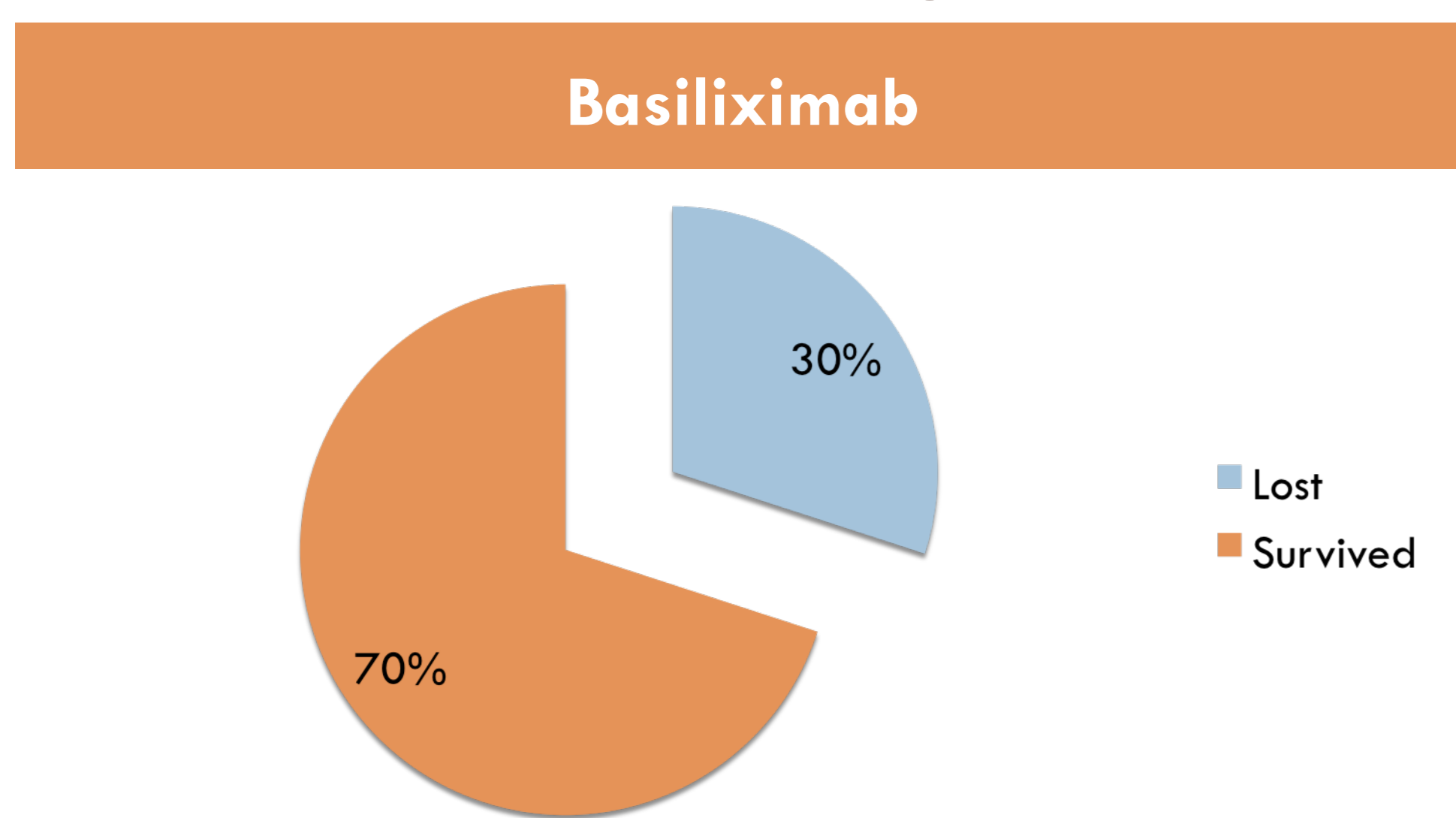
### Overall Kidney Graft Survival (p=ns)



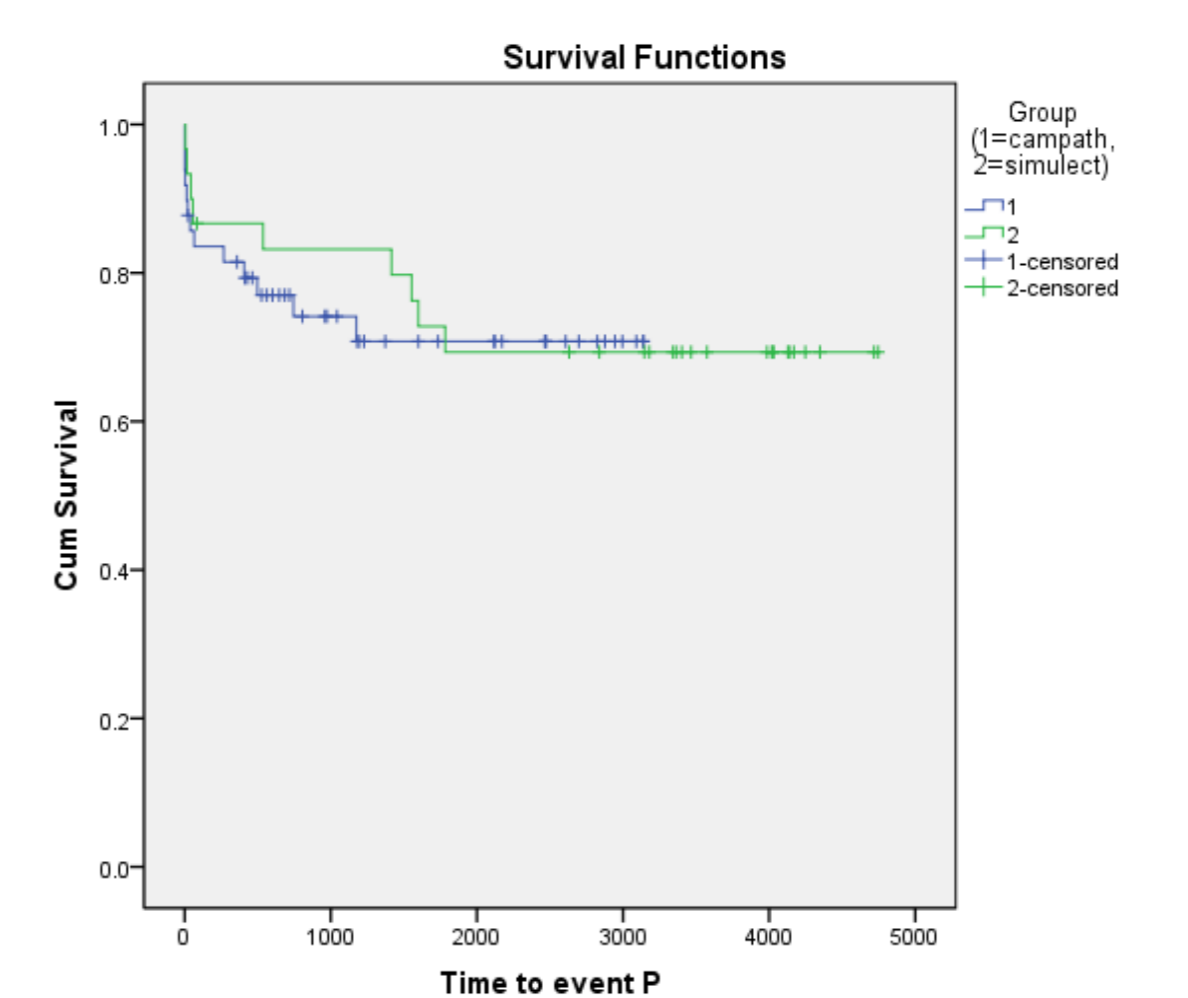
### Overall Kidney Graft Survival



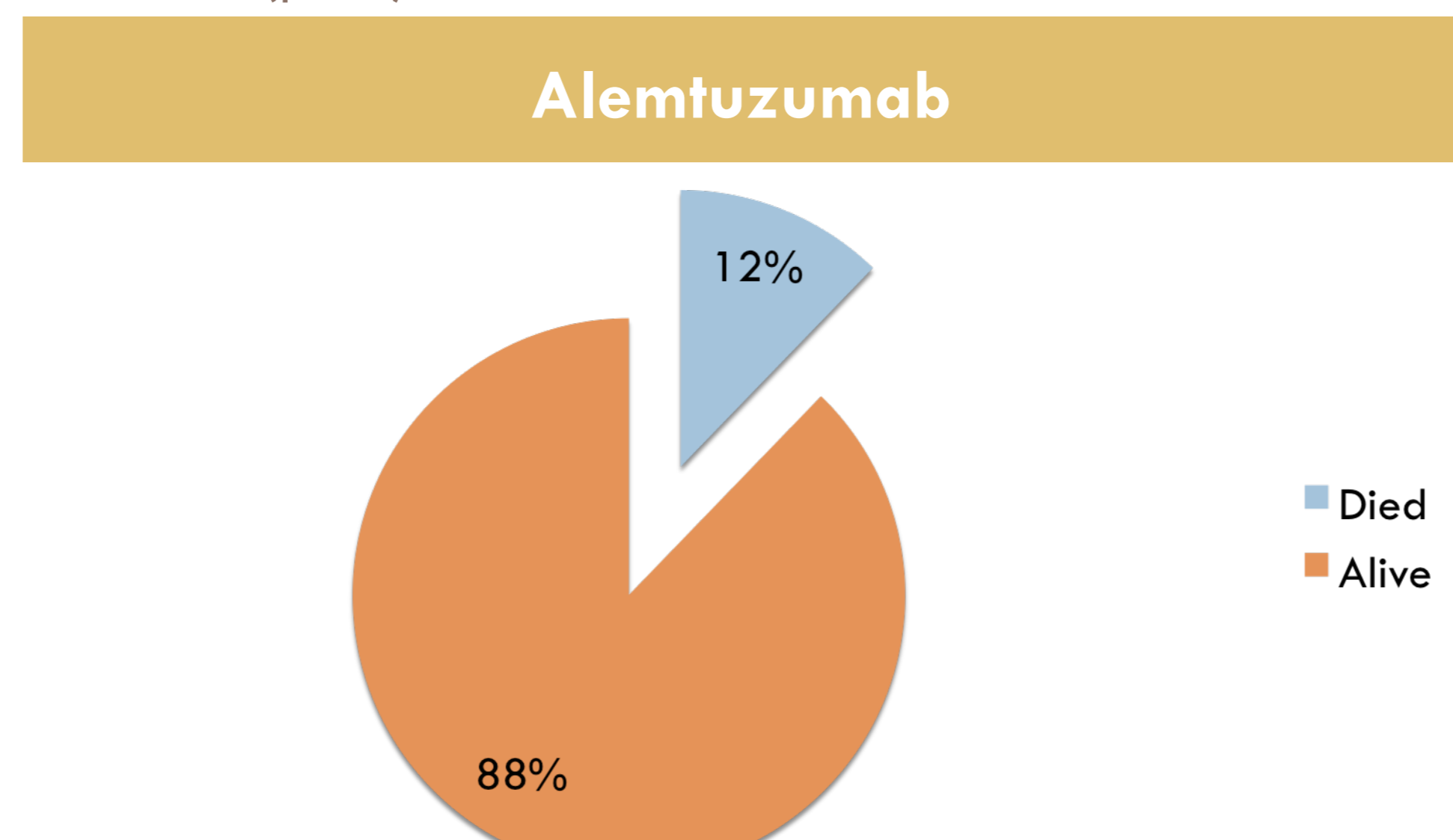
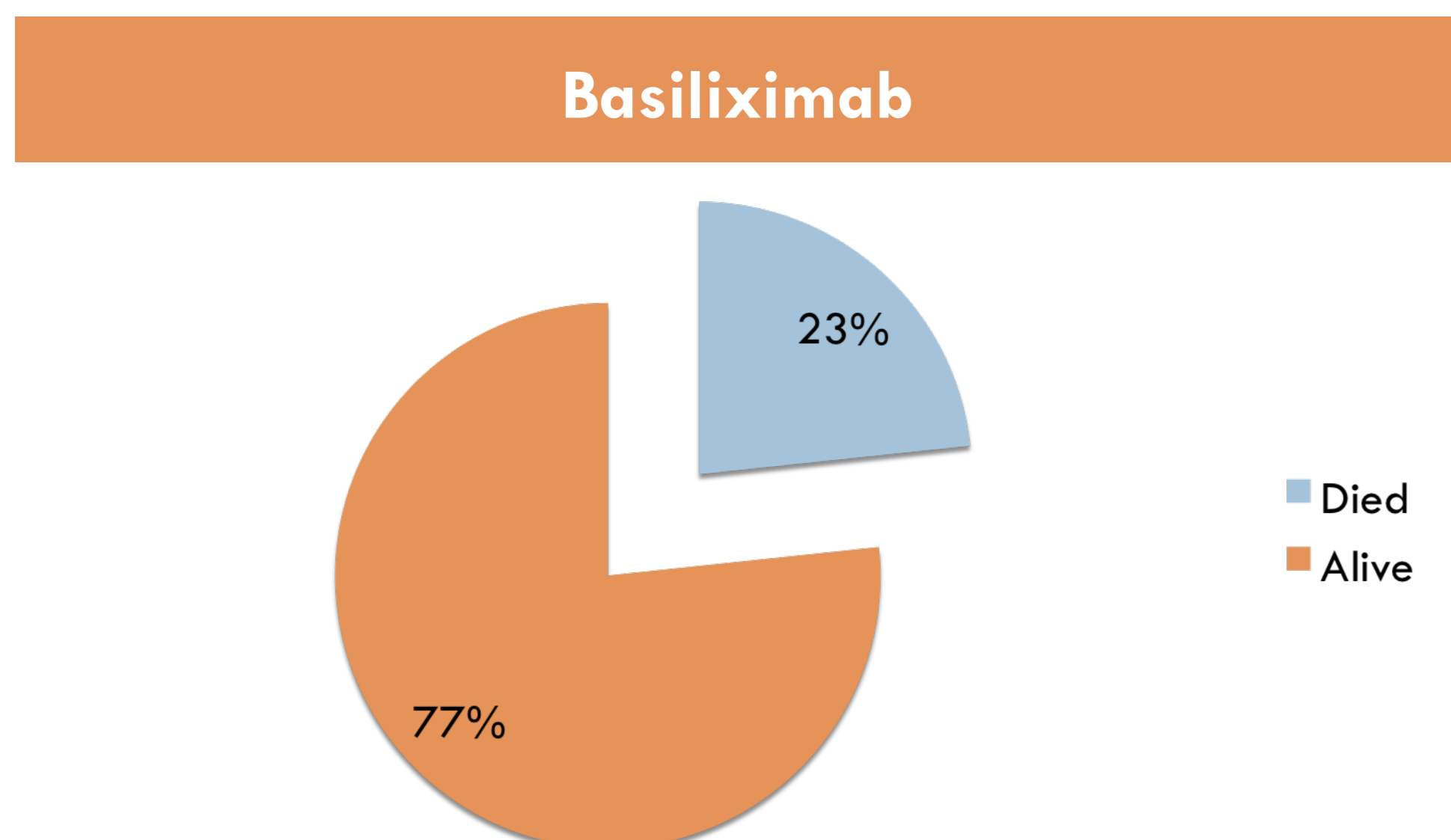
### Overall Pancreas Graft Survival (p=ns)



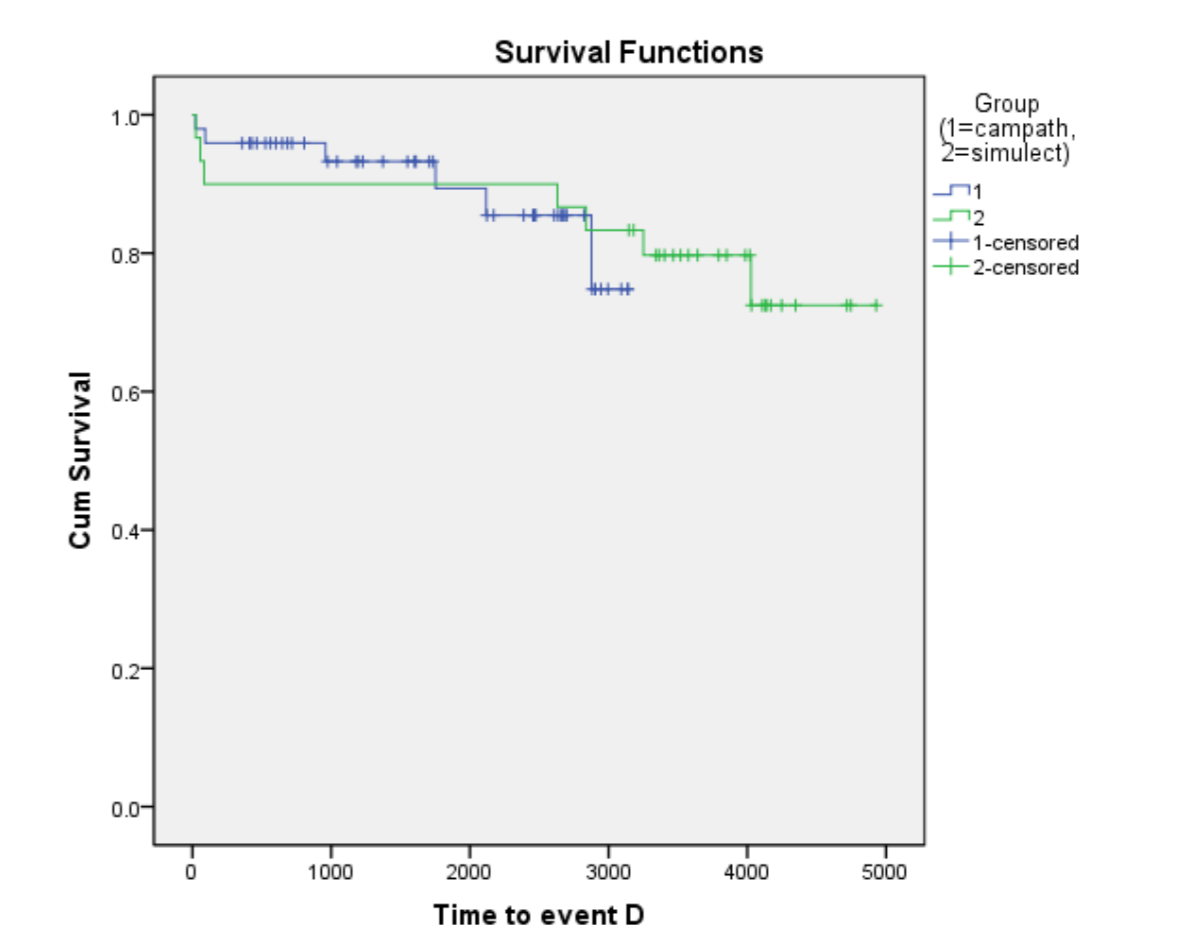
### Overall Pancreas Graft Survival (p=ns)



### Overall Patient Survival (p=ns)



### Overall Patient Graft Survival (p=ns)



## CONCLUSIONS

- Despite a longer follow up period, patients receiving Basiliximab induction appear to have comparable rates of patient and graft survival.
- There appeared to be an increasing trend for kidney graft survival in the Basiliximab group.