

# Associations of clinical and imaging characteristics with collateral grade on baseline CT angiography in patients with acute ischemic stroke due to large vessel occlusion

Eveline Wiegers<sup>1</sup>, Bob Roozenbeek<sup>2,4</sup>, Maxim Mulder<sup>2,4</sup>, Ivo Jansen<sup>3</sup>, Esmee Venema<sup>1,2</sup>, Kars Compagne<sup>4</sup>, Olvert Berkhemer<sup>2,4,5</sup>, Bart Emmer<sup>4</sup>, Henk Marquering<sup>3</sup>, Adriaan van Es<sup>4</sup>, Marieke Sprengers<sup>3</sup>, Yvo Roos<sup>6</sup>, Charles Majoie<sup>3</sup>, Hester Lingsma<sup>1</sup>, Diederik Dippel<sup>2</sup>, Aad van der Lugt<sup>4</sup>

<sup>1</sup>Department of Public Health, Erasmus MC University Medical Center, Rotterdam, the Netherlands; <sup>2</sup>Department of Neurology, Erasmus MC University Medical Center, Rotterdam, the Netherlands; <sup>3</sup>Department of Radiology, Academic Medical Center, Amsterdam, the Netherlands; <sup>4</sup>Department of Radiology and Nuclear Medicine, Erasmus MC University Medical Center, Rotterdam, the Netherlands; <sup>5</sup>Department of Radiology, Maastricht University Medical Center, Maastricht, the Netherlands; <sup>6</sup>Department of Neurology, Academic Medical Center, Amsterdam, the Netherlands.

## BACKGROUND

Poor cerebral collateral circulation is associated with poor functional outcome after ischemic stroke and reduces the beneficial effect of endovascular treatment.

## AIM

We aimed to identify **clinical and imaging characteristics that are associated with collateral grade on baseline CTA** in patients with acute ischemic stroke due to a proximal intracranial occlusion in the anterior circulation.

## METHODS

- Data from the MR CLEAN trial (n=500) and the MR CLEAN Registry (n=1488), total n=1988
- CTA collateral grade was scored on a 4-point scale (Panel)
- Univariable and multivariable ordinal logistic regression analysis to assess the association between CTA collateral grade and characteristics previously suggested in the literature
- Characteristics with P<0.157 in univariable analysis were included in the final multivariable regression model

## RESULTS

**Table 1.** Clinical and imaging characteristics at baseline.

Age – median (IQR)	69 (58 – 79)
Male sex – n. (%)	1086 (55)
NIHSS – median (IQR)	16 (12 – 20)
Systolic blood pressure – mean mmHg (SD)	149 (24)
Diastolic blood pressure – mean mmHg (SD)	82 (15)
History of hypertension – n. (%)	972 (49)
History of diabetes mellitus – n. (%)	323 (16)
History of myocardial infarction – n. (%)	302 (15)
History of ischemic stroke – n. (%)	303 (15)
Use of statins – n. (%)	665 (34)
Use of antiplatelets – n. (%)	637 (32)
ICA-(T) occlusion – n. (%)	533 (28)

**Table 2.** Collateral grades on baseline CTA.

Grade 0	n=123	7%
Grade 1	n=596	32%
Grade 2	n=734	39%
Grade 3	n=422	23%

**Table 3.** Associations of various characteristics with baseline CTA collateral grade. Adjusted common odds ratios <1 represent associations with poorer collateral grades.

Characteristic	Adjusted common OR	P-value
Age (per 10 years)	0.88 (0.83 - 0.94)	<0.001
Male sex	0.71 (0.58 - 0.80)	<0.001
History of ischemic stroke	0.83 (0.71 - 1.15)	0.12
Baseline diastolic blood pressure (per 10 mmHg)	0.94 (0.90 - 1.00)	0.03
Use of statins	0.90 (0.74 - 1.09)	0.28
Use of antiplatelets	0.85 (0.70 - 1.04)	0.11
ICA-(T) occlusion	0.58 (0.49 - 0.70)	<0.001

## CONCLUSIONS

- Older age, male sex, higher baseline diastolic blood pressure, and occlusion of the ICA-(T) are associated with poorer CTA collateral grades.**
- No independent association was found with cerebrovascular risk factors, such as hypertension, diabetes, or extracranial carotid stenosis.

**Panel:** Scoring of CTA collateral grade

**Grade 0: absent collaterals**

0% filling of the occluded territory

**Grade 1: poor collaterals**

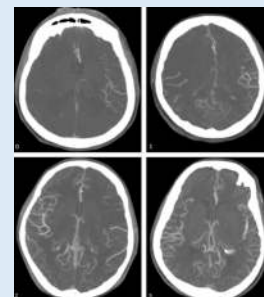
>0% and ≤50% filling of the occluded territory

**Grade 2: moderate collaterals**

>50% and <100% filling of the occluded territory

**Grade 3: good collaterals**

100% filling of the occluded territory



Contact: Bob Roozenbeek – b.roozenbeek@erasmusmc.nl