

THE ITALIAN VERSION OF SMARTPHONE ADDICTION INVENTORY (SPA-I)

for Adolescents:

Confirmatory Factor Analysis and relation with self-control and internalized-externalized symptoms

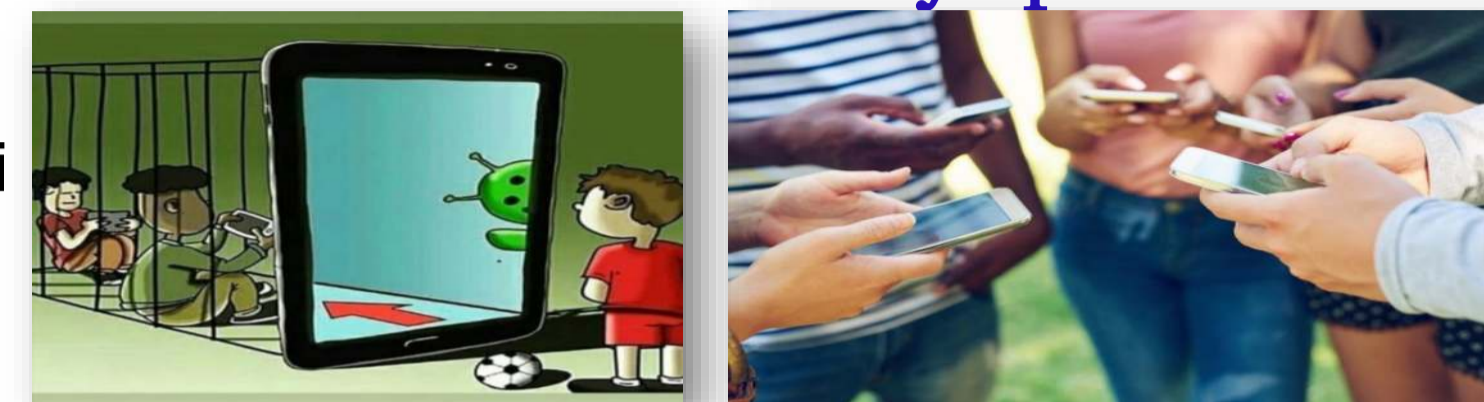


UNIVERSITÀ
DEGLI STUDI
DI PADOVA

DPSS
Dipartimento di Psicologia dello
Sviluppo e della Socializzazione



Giulia Bassi, Adriana Lis, & Silvia Salcuni
giulia.bassi@phd.unipd.it



BACKGROUND

- Excessive Smartphone use should be described as a multidimensional construct.

METHODS AND MATERIAL

- N = 446 Italian adolescents (M = 16.07, SD = 1.71).
- Self-control → Self-restraint subscale of Adolescent Self-Consciousness Questionnaire.
- Internalized – Externalized Symptoms → Total Difficulties Score of the self-report version of Strengths and Difficulties Questionnaire.
- Smartphone ab(use) → Italian version of Smartphone Addiction Inventory.

DISCUSSION

SPA-I to assess excessive smartphone use among adolescents. Self-control diminished smartphone ab(use).

AIM

- To confirm the factor structure of Smartphone Addiction Inventory Italian version for adolescents, and to evaluate the factor structure of Smartphone Addiction Inventory, original version among Taiwanese university students.
- Role of self-control as a mediator.

RESULTS

	χ^2 (df)	CFI	TLI	RMSEA	SRMR	AIC	BIC
ORIGINAL VERSION	801 (246)	.588	.827	.071	.056	21931	22251
ITALIAN VERSION	627 (242)	.620	.878	.060	.050	21765	22102

