
Hyperglycemia-Induced Endothelial Dysfunction

Domokos Gero

Additional information is available at the end of the chapter

<http://dx.doi.org/10.5772/intechopen.71433>

Abstract

Glucose-induced endothelial dysfunction plays a fundamental role in the development of diabetic vascular complications and glycemic control (the foundation of diabetes care) provides limited protection against the cardiovascular complications. Therefore, identification of novel drug targets and treatment approaches for diabetes complications represent a key direction of current pharmaceutical research. The “unifying theory” of hyperglycemia-induced endothelial cell injury organizes the events of cellular dysfunction in a linear cascade and identifies mitochondrial superoxide generation as the triggering event of the injury. Exposure to high glucose concentration for long periods or repeated glycemic swings may induce changes in metabolic substrate availability and lead to mitochondrial hyperpolarization. Changes in the mitochondrial membrane potential induce superoxide production by the electron transport chain and result in oxidative stress. Mitochondrial superoxide is also responsible for the induction of other sources of reactive oxygen species (ROS) within the cells, including advanced glycation end products (AGEs) and the NADPH oxidase. Mitochondria also show morphological changes and impaired assembly of the respiratory complexes occurs, which results in cellular energy failure, cell senescence and vascular dysfunction. Current intervention strategies aim to inhibit the mitochondrial ROS production and novel therapeutic approaches are expected to provide valuable tools in diabetes therapy in the upcoming years.

Keywords: hyperglycemia, diabetes, endothelial cells, oxidative stress, mitochondria, electron transport chain, superoxide, bioenergetics

1. Introduction

The significance of hyperglycemia-induced endothelial damage is underlined by its pathogenic role in diabetes complications and the associated costs of diabetes management. The global prevalence of diabetes among adults over 18 years of age has risen from 4.7% in 1980 to 8.5% in 2014 with a steep increase over the age of 50, reaching the peak prevalence of

25% above 80 years of age [1, 2]. The (direct and indirect) medical costs for patients with diabetes are double the amount compared to expenses for nondiabetic individuals and three times higher in case of cardiovascular diseases such as myocardial infarction or stroke [3]. Currently, diabetes-related healthcare expenditure accounts for 10% of the total healthcare costs and it is estimated to increase by 70% over the next 25 years leading to a serious societal and economic burden [4]. Diabetes complications are responsible for the majority of the associated costs and excess costs gradually increase with the duration of the disease leading to substantially higher expenses after 8–10 years [3, 5]. Hyperglycemia-induced endothelial dysfunction is the major contributor to the development of vascular disease in diabetes mellitus [6]. While insulin resistance may be present in patients with no increase in plasma glucose level and it may contribute to endothelial dysfunction, the major pathway that is responsible for endothelial damage is glucose-induced oxidative stress in diabetes [6, 7].

2. Characteristics of the damage

2.1. Glucose and oxidative stress in diabetic vascular damage

Endothelial dysfunction is a pathological state of the endothelium and can be defined as an aberration of the normal endothelial function of vascular relaxation, blood clotting and immune function. In general, it means impaired endothelium-dependent vasodilation as a result of imbalance between vasodilating and vasoconstricting substances produced by (or acting on) the endothelium. Endothelial dysfunction can be a significant predictor of coronary artery disease and atherosclerosis and it increases the risk of stroke and heart attack [8]. In basic science and in clinical research, endothelial function is commonly assessed by the use of the acetylcholine-mediated vasodilatation test or by flow-mediated vasodilation, and this methodology is considered the 'gold standard' at this moment [8, 9]. Endothelial dysfunction is primarily responsible for the impaired vasorelaxation in diabetes but it is closely followed by the development of vascular smooth muscle cell dysfunction [10, 11]. Impaired relaxation may be caused by diminished production or increased destruction of vasodilating factors or impaired response to them in diabetes. Oxidative stress is considered as one of the major underlying mechanisms, which leads to endothelial dysfunction in hyperglycemia, since the therapeutic supplementation of antioxidants or antioxidant enzymes can restore the endothelium-dependent vasodilation in experimental models of diabetes [10].

Glucose-induced damage is apparently controversial: glucose is a major source of energy and a small increase in blood glucose, which has no obvious ill effect on the short term, can cause serious long-term complications in diabetes. Glucose uptake is noninsulin dependent in endothelial cells and it occurs via GLUT1 (glucose transporter 1), thus high blood glucose level results in similarly high intracellular glucose concentration in endothelial cells [12, 13]. Endothelial cells have few mitochondria and primarily use glycolysis to produce ATP molecules, which suggests low oxygen consumption and relatively low level of oxidant production [14]. Furthermore, higher glucose concentration would allow even higher rate of anaerobic metabolism to produce the necessary amount of ATP and limit aerobic metabolism,

oxygen consumption and reactive oxygen species (ROS) production in the cells. Still, hyperglycemia is associated with the activation of various ROS-producing pathways and increased oxidant production in endothelial cells [15, 16]. Oxidants play a significant role in the destruction of nitric oxide and other signaling molecules and result in impaired vasoreactivity [10, 17, 18]. Inflammatory pathways may be implicated in the early stages of the injury and they are typically involved in the later stages of the disease and contribute to oxidant production and inflammatory cytokine secretion, which can also change the vascular function [19]. Oxidative stress also induces DNA damage that triggers endothelial cell senescence that might have an impact on vascular function in the later stages of the injury [20]. There are approximately 2–10 trillion ($2\text{--}10 \times 10^{12}$) endothelial cells in the human body and they form the endothelial surface of 500 m² of blood vessels and require constant renewal [21–23]. Mostly, the resident stem cells (located in the vessel wall) take part in the repair processes but also circulating progenitor cells that arise from the bone marrow are involved in the process [22]. In diabetes, endothelial cell turnover is impaired and it might be a consequence of accelerated aging or reduced renewal of cells [24, 25]. While ROS-mediated injury dominates in the earlier stages of hyperglycemia-induced damage, cell senescence and impairment of endothelial cell turnover may play the leading part in the later stages.

2.2. Target cells of hyperglycemia

Hyperglycemia induces damage in a select cell population in the body, including mainly the mesangial cells in the kidney, neurons and Schwann cells in peripheral nerves and a subset of endothelial cells: only the microvascular and the arterial endothelial cells show impairment [26]. Interestingly, this dichotomy in the vulnerability is often preserved in *in vitro* experiments: microvascular endothelial cells are more susceptible to glucose-induced injury, whereas venous endothelial cells show reduced oxidant production and damage. This suggests that differences in the pressure, blood flow or vessel function in various parts of the circulation may not be accounted for the susceptibility. It is rather an inherent difference between the cells that explain the vulnerability of the microvasculature [27]. There are differences in the protein and RNA expression patterns, including the miRNA expression profiles, and the different responses of microvascular and macrovascular endothelial cells to various metabolic stimuli may be attributed to this difference [28].

Differences in glucose uptake may be partially responsible for the susceptibility: most cells tightly regulate the glucose transport rate and prevent the unrestricted uptake, but endothelial and mesangial cells are unable to decrease the transport rate [29, 30]. Glucose overload induces a gradual increase in the mitochondrial membrane potential and the elevated protonic potential increases the superoxide generation by the respiratory chain [31]. The mitochondrial membrane potential is regulated by uncoupling proteins in the cells: these channels release excess protons from the intermembrane space to the matrix and protect against mitochondrial hyperpolarization. Endothelial cells express uncoupling protein 2 (UCP2) and its transport capacity is controlled by oxidative stress: high levels of oxidants open the channel, whereas the absence of oxidants closes the channel [32, 33]. In venous endothelial cells, hyperglycemia upregulates the expression of UCP2 and it effectively protects against mitochondrial

hyperpolarization and ROS production [34, 35]. This process does not work in microvascular endothelial cells: there is no change in UCP2 expression in response to elevated glucose concentration resulting in mitochondrial hyperpolarization with a simultaneous rise in mitochondrial superoxide generation [35]. In many cases, endothelial cells were found to produce excess levels of mitochondrial oxidants in response to hyperglycemia only in the presence of pro-inflammatory cytokines, suggesting further mechanisms to be involved in the hyperglycemia-induced cell-damaging processes but the potential implication of inflammatory pathways has not been clarified [36].

2.3. Time course of hyperglycemic injury

At cellular level, hyperglycemic damage occurs within a few days and induces compensatory and repair mechanisms that may have consequences in the cell population. Vascular endothelium covers a huge surface in the body and possesses a huge capacity to compensate for any damage that occurs over longer periods, thus changes in vascular function may occur with a delay.

In experimental models, glucose levels are often above 20–30 mmol/L and vascular dysfunction develops over weeks or within a few months [37]. The development of hyperglycemia-induced endothelial cell damage is neither instantaneous *in vitro*, it usually takes a few days of exposure to high glucose levels to induce a significant increase in the mitochondrial membrane potential and oxidant production [35, 38]. Hyperglycemia-induced ROS production induces RNA and DNA damage that may be responsible for the reduced proliferation rate observed in endothelial cells [39]. Reduced proliferation and senescence occur after more than 10 doublings of endothelial cells exposed to 25 mmol/L glucose *in vitro* [25].

On the other hand, diabetic vascular complications occur after years of hyperglycemic exposure and poor glycemic control accelerates the development of the disease [40, 41]. Although complications usually first appear some years after clinical diagnosis, retinopathy and nephropathy were often present (in 10–37% of patients) at the time of clinical diagnosis or within the first year after diagnosis [42]. Glucose levels that induce endothelial damage are moderately elevated in most patients due to improved diabetes care and diabetes self-management education and support (DSME/S) [43, 44].

Endothelial cell senescence and reduced proliferation are the dominant features in diabetes, still pathological proliferation of blood vessels occurs in diabetic retinopathy [45]. This controversy is explained by the fact that progressive retinal angiogenesis is preceded by a series of events that is characterized by reduced cell proliferation and stimulates neovascularization in the retina [45]. Proliferative diabetic retinopathy is not the primary pathogenic response to hyperglycemia but a compensatory response to retinal hypoxia. Diabetic retinopathy starts with the loss of two cell types of the retinal capillaries: the endothelial cells and the vessel supporting pericytes and the earliest pathologic signs are acellular, nonperfused capillary segments in the retina [45]. Pericyte loss may precede the endothelial damage in the retina and it is caused by angiotensin II overexpression induced by oxidative stress in diabetes. However, the increased number of migrating pericytes and loss of pericytes from the straight

parts of capillaries may also occur as a result of hypoxia, and thus might be a consequence of prior endothelial damage. On the other hand, the loss of pericytes results in reduced proliferation of stalk endothelial cells leading to fewer phalanx cells and promotes hypoxia in the retina. Hypoxia is the main stimulus of uncontrolled proliferation in diabetic vessels and both angiotensin II and vascular endothelial growth factor (VEGF) are involved in the neovascularization. In the pathological angiogenesis, not only the retinal endothelial cells take part but also the bone marrow-derived progenitor cells that may explain how enhanced proliferation capacity replaces the cell loss at the later stage.

3. Triggers of endothelial dysfunction and damage

3.1. Hyperglycemia and 'glucose memory'

Glucose-induced endothelial damage is not only caused by constantly high glucose concentration but also by transiently elevated glucose levels. In experimental models, damage induced by intermittent high glucose is comparable or more severe than the injury induced by constantly high glucose concentration. Glucose levels studied in most experimental models are often much higher than the values that cause irreversible damage in humans on the long term and result in accelerated progression of diabetic complications.

Diagnostic criteria for diabetes are based on the relationship between plasma glucose values and the risk of diabetes-specific microvascular complications: blood glucose concentration that causes diabetic vascular damage has been empirically determined and diagnostic criteria were established. The World Health Organization (WHO) introduced new diagnostic criteria in 1980, which were globally accepted, but had to lower the cut-off values for diabetes in 1999 since growing body of evidence supported the development of complications at lower blood glucose levels [46, 47]. The updated threshold values has raised considerable dispute and are often criticized for not preventing complications but further lowering has not been achieved because of the risk of hypoglycemia. The definition of hyperglycemia is challenging, since blood glucose values show a physiological increase after a meal and this calls for separate normal values for fasting, postprandial and random blood glucose levels. Still, it is evident that "high" glucose levels that induce damage in endothelial cells in the long term are very close to the normal blood glucose values, less than a twofold increase in the blood glucose level triggers injury in the cells. In the past, osmotic damage was presumed to play a pathogenic role in glucose-induced cellular injury but the minor changes in osmolality rule out this possibility. In healthy human subjects, the rise in blood glucose levels after a meal typically reaches or goes beyond these values, making the definition of hyperglycemia rather confusing [48]. From the pathogenic viewpoint of hyperglycemia, absolute cut-off values cannot be established to separate normoglycemic and hyperglycemic concentration ranges.

While earlier studies confirmed that the risk of cardiovascular complications corresponds to the average increase in glucose level (measured as glycated hemoglobin, HbA1c), more

recent studies also found independent associations with the postprandial peaks [49]. These results highly suggest the action of secondary mediators that are rather induced by the fluctuations in blood glucose (glycemic variability) than by an absolute increase. Experimental models confirmed that glycemic swings caused at least as severe tissue damage as constant hyperglycemia, and persistence of high-glucose memory was postulated in cells and animals that were exposed to normoglycemic conditions following a hyperglycemic exposure [50–52]. Endothelial cells when returned to normal glucose concentration after exposure to high glucose showed increased ROS production and activation of poly(ADP-ribose) polymerase (PARP) even a week following the normalization of the glucose level and in this respect they showed similar characteristics to cells maintained at high glucose [52]. The persistence of oxidative stress in endothelial cells *in vitro* confirms that ‘glucose memory’ is an inherent feature of these cells. It also means that once hyperglycemia activates the various ROS-producing pathways they continue to produce oxidants for multiple days or weeks in endothelial cells even if the glucose level is fully normalized. Oxidative stress is the key feature of the changes induced by hyperglycemia, and ‘metabolic memory’ is another term used that refers to the characteristic metabolic changes [51]. The length of high glucose memory is unknown in humans but it is suspected to last longer than *in vitro* because (1) inflammatory pathways are also involved and (2) the response is not limited by the life cycle of single cells but it is possibly carried over to multiple cell generations.

Blockade of the early changes has been confirmed to prevent or slow down the progression of complications but the reversal at a later phase may not be achieved by glycemic control [53]. Benefits of intensive glucose control can be detected after 3 years of treatment if no retinopathy or mild disease is present at the start of the treatment strategy in type 1 diabetes [54]. The importance of blocking the glucose-induced damage early on in type 2 diabetes has been confirmed by the results of the United Kingdom Prospective Diabetes Study (UKPDS) [41]. On the other hand, there is little benefit of strict glucose control if established cardiovascular disease is already present at the start of the treatment regimen [53]. Similarly, in diabetic rats, a 6-month long period of good glycemic control following 2 months of poor glycemic control results in significantly reduced progression, whereas no benefit is observed on retinopathy if good glycemic control was started after 6 months of poor glycemic control: both nitrosative stress and tissue damage were similarly advanced as with 12 months of poor glycemic control [55, 56]. These suggest that the processes started by hyperglycemia may be partially reversed if normoglycemia follows a shorter period of high glucose exposure. It is still unclear whether the detrimental effects of transient hyperglycemia is buffered within the individual cells or it is the entire population of endothelial cells that compensate for the changes and the reason why progressive damage occurs following an extended hyperglycemic period is the loss of the renewal capacity of the cells.

3.2. Downstream molecules responsible for the damage

The mechanism of high glucose memory is still obscure and little is known about the pathways involved. Hyperglycemia modifies the metabolism of the cells and is suspected to induce various downstream pathways or molecules that are responsible for maintaining the

tissue damaging actions. Oxidative stress pathways act as executors of tissue damage but the linkage between hyperglycemia and the sustained activation of oxidative pathways still remains rather elusive.

Alterations in the metabolome in diabetes are suspected to maintain the metabolic changes for extended periods even if there is little change in the expression profile of proteins [57]. Excess glucose load induces changes in a series of metabolite levels and the normalization of these levels may not occur as rapidly as glucose lowering. Apart from glucose, the concentrations of glucose-1-phosphate, lactate, glucosamine, mannose, mannosamine, hydroxybutyrate and glyoxalate also elevate in the plasma in diabetes [58]. All of the above intermediates and the increased fatty acids increase the tricarboxylic acid (TCA) cycle flux in the cells. Perturbation of the TCA cycle flux is also supported by other metabolomics studies in diabetes [59]. Associations between diabetes risk and the plasma levels of branched chain (BCAA, isoleucine, leucine and valine) and aromatic (phenylalanine, tyrosine) amino acids have been found suggesting that the changes not only involve the carbohydrate and lipid metabolism but also the catabolism of proteins and amino acids [60]. Catabolism of BCAAs provides intermediates for the TCA cycle and potentially drives the TCA flux. Apart from the systemic changes that affect the milieu of the cells, specific changes of amino acid levels have been observed in endothelial cells: hyperglycemia increases the concentration of alanine, proline, glycine, serine and glutamine within the cells and induces elevation of the amino adipate, cystathionine and hypotaurine levels [61]. Whether these changes are only markers of hyperglycemia or they play a pathogenic role in oxidative stress induction is still undetermined.

4. Mechanisms of ROS production in hyperglycemia

4.1. Glucose-induced oxidative stress pathways

Changes in glucose metabolism are presumed to be directly responsible for provoking oxidant production in endothelial cells. Endothelial cells predominantly use glucose as energy source and rely on glycolysis to generate ATP molecules [14]. Glycolytic flux exceeds the rate of oxidative phosphorylation (OXPHOS) by two orders of magnitude in endothelial cells *in vitro* and similar ratio is suspected *in vivo* [62, 63]. The contribution of fatty acid oxidation to energy production is thought to be negligible in capillary endothelial cells, though endothelial cells take up fatty acids and transport them to the neighboring cells, thus play important role in transendothelial fatty acid delivery [64]. Since the function of capillary endothelial cells is to deliver oxygen and fuel sources to other cells in tissues, they do not consume much oxygen or store energy but preserve them to other perivascular cells. Thus, excess glucose is not converted to glycogen for storage in endothelial cells, but is pushed toward glycolysis [65]. Glutamine is a further energy source in endothelial cells via glutaminolysis that directly produces one GTP molecule (that can be converted to ATP) and further five ATP molecules from NADH^+ and FADH_2 via OXPHOS. Glutamine is the most abundant amino acid in the plasma, and glutaminolysis is a valuable energy source if glycolytic output is low since it feeds alpha-ketoglutarate to the TCA cycle and similarly produces lactate (or pyruvate). However, all the energy producing steps in

glutaminolysis occur in the mitochondria via the TCA cycle and OXPHOS and mitochondrial impairment may affect the energy efficacy of glutaminolysis [66].

The metabolic balance between glycolysis and OXPHOS is controlled by nutrients (the ATP and NADH output) via Sirtuin 1 (SIRT1) and AMP-activated protein kinase (AMPK) in the cells. SIRT1 is a NAD⁺-dependent histone deacetylase enzyme that regulates energy homeostasis via gene expression changes induced by deacetylating a variety of histone proteins, transcription factors and coregulators [67]. The activity of SIRT1 is primarily controlled by NAD⁺ abundance and NAD⁺/NADH ratio. AMPK is a master sensor of the energy level in the cells: it detects the cellular ATP concentration and is activated by a decrease in the ATP level. There is a complex interplay between AMPK and SIRT1: the two enzymes indirectly activate each other. Activated SIRT1 deacetylates LKB1 (tumor suppressor liver kinase B1) that phosphorylates and activates AMPK [68, 69], whereas AMPK activates SIRT1 by increasing the NAD⁺/NADH ratio either by inducing the NAD⁺ biosynthesis enzyme NamPRT (nicotinamide phosphoribosyltransferase) or by a NamPRT-independent mechanism [70]. Thus, caloric restriction activates both AMPK and SIRT1, whereas both enzymes are suppressed if energy sources are abundant like in hyperglycemia [71, 72]. In caloric restriction, SIRT1 deacetylates and activates peroxisome proliferation activating receptor- γ (PPAR- γ) coactivator 1- α (PGC-1) and forkhead box O1 protein 1 (FOXO1) and leads to glucose sparing: suppressed glycolysis and increased mitochondrial activity and they also activate gluconeogenesis [73, 74]. On the other hand, in hyperglycemia, the activity of AMPK and SIRT1 is suppressed and it results in enhanced glycolysis, inhibition of gluconeogenesis and decreased mitochondrial biogenesis and OXPHOS [73].

Overload of glycolysis and the pentose phosphate pathway are the initial steps that trigger alternate pathways of glucose metabolism (**Figure 1**). Prior perturbation of mitochondrial metabolism (TCA cycle overload and impaired OXPHOS) is highly possible since inhibition of mitochondrial superoxide generation prevents the activation of the above pathways but the exact mechanism that initiates these events is unknown [26]. The high glycolytic input and low OXPHOS capacity may gradually block the main metabolic steps and shunt the metabolism to alternative pathways. These include the methylglyoxal, hexosamine and polyol pathways: dihydroxyacetone phosphate (DHAP) is diverted to the methylglyoxal pathway and leads to protein kinase C (PKC) activation, and fructose-6-phosphate (F6P) increases the flux through the hexosamine pathway and excess glucose enters the polyol pathway when converted to sorbitol [66, 75]. Suppressed expression of the gluconeogenetic enzyme glucose-6-phosphate dehydrogenase (G6PDH) prevents shunting of glucose to the pentose phosphate pathway that further increases the glycolytic load [76, 77]. All these processes lead to ROS production and the generation of advanced glycation end products (AGEs), the products of nonenzymatic glycation and oxidation of proteins and lipids that accumulate in diabetes. AGEs signal through the receptor of AGE (RAGE), a cell surface receptor that is also activated by the damage-associated molecular patterns (DAMP) HMGB1 (high-mobility group box 1) and S100 proteins [78]. RAGE activates nuclear factor kappa B (NF- κ B) and controls several inflammatory genes, thus links hyperglycemia to inflammation. Since RAGE itself is upregulated by NF- κ B, inflammation is maintained by positive feedback in hyperglycemia as AGEs, the ligands are continuously produced.

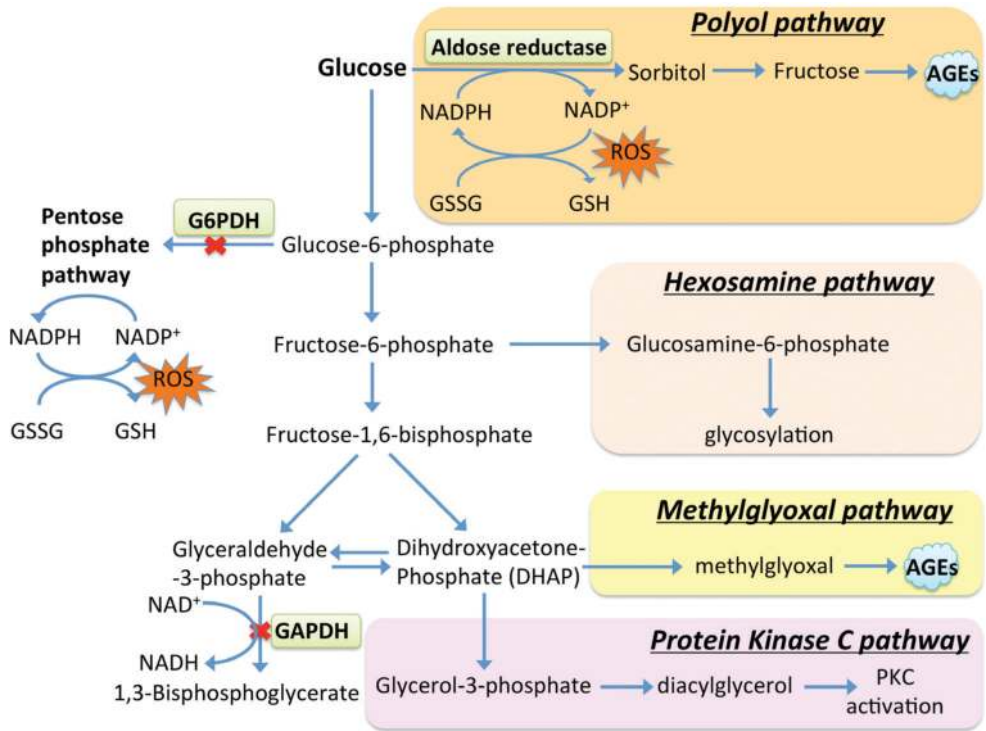


Figure 1. Hyperglycemia-induced ROS-producing pathways in the cytoplasm. AGEs: advanced glycation end-products; G6PDH: glucose-6-phosphate dehydrogenase; GAPDH: glyceraldehyde-3-phosphate dehydrogenase; GSH/GSSG: reduced/oxidized glutathione; NAD⁺/NADH: nicotinamide adenine dinucleotide; NADP⁺/NADPH: nicotinamide adenine dinucleotide phosphate and ROS: reactive oxygen species.

Interestingly, hyperglycemia induces a long-lasting suppression in SIRT1 and AMPK activity in endothelial cells: the activity of both enzymes remains low weeks after the normalization of glucose level following a week long hyperglycemia [68]. Thus, SIRT1 and AMPK have been implicated in glucose memory since restoration of their activity reduces the ROS production and PARP activity in the cells.

One further molecule that possibly takes part in the maintenance of oxidative stress in hyperglycemic endothelial cells is p66SHC (66-kDa Src homology 2 domain-containing protein) [79]. p66SHC is induced by hyperglycemia and it contributes to oxidative stress and endothelial damage. Genetic ablation of p66SHC reduces the oxidative stress in diabetic animals, protects against vascular dysfunction and blocks the progression of nephropathy [79, 80]. p66SHC is a redox enzyme that associates with 70 kDa heat shock protein (Hsp70) and localizes within the intermembrane space in the mitochondria. Upon oxidative stress, p66SHC is released from the complex and transfers electrons from the electron transfer chain (from cytochrome c specifically) to oxygen and produces hydrogen peroxide (H₂O₂) [81]. Under basal conditions, p66SHC is also present as an inactive enzyme in the cytoplasm

where it becomes activated via phosphorylation in response to cellular stress and translocates to the mitochondria. The active p66SHC diverts a fraction of the mitochondrial electron flow between complexes III and IV to produce ROS instead of water and is involved in the opening of the permeability transition pore during apoptosis. In hyperglycemia, p66SHC may function as a shunt pathway if complex IV activity is impaired. The activity of p66SHC is also regulated by acetylation: it is a direct target of SIRT1 and diminished SIRT1 activity increases the acetylation and activity of p66SHC in hyperglycemia [82]. Furthermore, acetylation of p66SHC promotes the phosphorylation-mediated activation of the protein, and since the acetylation-resistant p66SHC isoform partially protects against the vascular impairment, it may play a pathogenic role in diabetic vascular dysfunction. The linkage to SIRT1 and the protection associated with the loss of p66SHC suggest that p66SHC make a substantial contribution to oxidative stress in diabetes and it may represent the key target of SIRT1.

4.2. Unifying hypothesis: the role of mitochondrial oxidants

With the growth of our knowledge about glucose-induced cellular damage and the various molecules and pathways involved in the process, the pathomechanism of glucose-induced damage has become inexplicable. In an effort to explain the puzzling complexity of the cellular events, Michael Brownlee introduced a unifying hypothesis in which he placed the events in an integrating linear model [26]. In the unifying mechanism, mitochondrial superoxide generation is placed in center stage followed by all other ROS-producing pathways as secondary events. As the contribution of mitochondrial energy production seems negligible in endothelial cells, this proposition was a striking novelty at first, but it renders the series of events logically based on a wealth of scientific results. First of all, the unifying framework assumes that the main ROS-producing mechanisms implicated in hyperglycemic cellular damage are interrelated and a common pathway is responsible for their activation [75]. Secondly, the overload of glycolysis rather occurs as a single downstream perturbation of metabolism that leaves behind glycolytic intermediates than by multiple blockades of glycolytic enzymes in response to excess glucose input. Thus, inhibition of a downstream step of glucose catabolism in the mitochondria might be responsible for the activation of the ROS-producing shunt pathways in the cytoplasm. The observation that prevention of mitochondrial superoxide generation inhibits the cytoplasmic ROS production pathways (PKC activation, sorbitol accumulation and AGE production) also supported the assumption that mitochondrial damage precedes the glycolytic impairment [83].

The exact nature of hyperglycemic perturbation of mitochondrial metabolism remains enigmatic, and it is still debatable whether superoxide itself or the steps leading to its increased production is the triggering event of glucose-induced damage. High TCA flux and elevated glycolytic pyruvate input were detected in hyperglycemia and these may serve as inducers of mitochondrial ROS production but might also be the consequences of dysfunctional OXPHOS [83]. Various pharmacological interventions that reduce the mitochondrial ROS production effectively inhibit the hyperglycemic damage [26, 38, 75]. Higher flux through the electron transport chain is expected to reduce the accumulation of glycolytic intermediates and prevent

the activation of oxidative stress pathways but only some of the interventions increased the electron transport (e.g. uncoupling agents and proteins), whereas others (e.g. antioxidants) did not change it or severely reduced it (complex II inhibition). Also, the increased electron flow may induce a proportional rise in superoxide generation by the electron transport chain if electron leakage is unaffected. Furthermore, endothelial cells, in which the mitochondrial DNA is selectively depleted (rho zero cells) and lacks a functional electron transport chain, fail to activate PKC, the polyol and hexosamine pathways and they do not produce AGEs, though their mitochondrial metabolism is impaired and they are expected to accumulate glycolytic intermediates [26]. These observations led to the proposition that mitochondrial superoxide generated by the electron transport chain is responsible for the initiation of hyperglycemic endothelial damage [26, 83, 84].

4.3. The mechanism of glucose-induced mitochondrial superoxide generation

Mitochondria produce superoxide nonenzymatically via multiple respiratory complexes in the electron transport chain and enzymatically via the mitochondrial xanthine oxidase [85–87]. The nonenzymatic production of superoxide occurs when a single electron is directly transferred to oxygen by prosthetic groups of the respiratory complexes or by reduced coenzymes that act as soluble electron carriers. The electron transport chain may leak electrons to oxygen and it is the main source of superoxide in hyperglycemia. Mitochondrial monoamine oxidase (MAO) and p66SHC also produce H_2O_2 within the mitochondria that may contribute to oxidative stress in hyperglycemia [88].

Molecular oxygen is biradical; it has two unpaired electrons in the outer orbitals, which makes it chemically reactive. In the ground state, the unpaired electrons are arranged in the triplet state, and as a result of spin restrictions, molecular oxygen is not highly reactive: it can only react with one electron at a time. If one of the unpaired electrons is excited and changes its spin (oxygen goes from the triplet state to the short-lived singlet state), it will become a powerful oxidant that is highly reactive [86]. The reduction of oxygen by one electron at a time produces superoxide ($O_2^{\cdot-}$) anion that might be converted to hydrogen peroxide (either spontaneously or through a reaction catalyzed by superoxide dismutase), which may be fully reduced to water or partially reduced to hydroxyl radical (OH^{\cdot}). In addition, superoxide may react with other radicals including nitric oxide (NO^{\cdot}) and form peroxynitrite ($ONOO^{\cdot-}$), another very powerful oxidant. The respiratory components are thermodynamically capable of transferring one electron to oxygen and form superoxide in the highly reducing environment of the mitochondria, since the standard reduction potential of oxygen to superoxide is -0.160 V and the respiratory chain incorporates components with standard reduction potentials between -0.32 V (NAD(P)H) and $+0.39$ V (cytochrome a_3 in Complex IV) [86].

In the respiratory chain, electrons move along the electron transport chain going from donor to acceptor molecules until they are transferred to molecular oxygen (the standard reduction potential of oxygen/ H_2O couple is $+0.82$ V), while the generated free energy is used to synthesize ATP from ADP and inorganic phosphate. Respiratory Complex I transfers electrons from NADH and Complex II from $FADH_2$ to coenzyme Q (CoQ, ubiquinone), which is the

substrate of Complex III. Complex III transfers electrons from reduced CoQ to cytochrome C, which is used by Complex IV to reduce oxygen into water. The step-by-step transfer of electrons allows the free energy to be released in small increments. The energy released as electrons flow through the respiratory chain is converted into a H^+ gradient through the inner mitochondrial membrane: protons are transported from the mitochondrial matrix to the intermembrane space (by Complexes I, III and IV) and a proton concentration gradient forms across the inner mitochondrial membrane [89]. Since the mitochondrial outer membrane is freely permeable to protons, the pH of the mitochondrial matrix is higher (the proton concentration is lower) than that of the intermembrane space and the cytosol. An electric potential (mitochondrial membrane potential) of 140–160 mV is formed across the inner membrane by pumping of positively charged protons outward from the matrix, which becomes negatively charged [90]. Thus, free energy released during the oxidation of NADH or $FADH_2$ is converted to an electric potential and a proton concentration gradient—collectively, the proton-motive force—and this energy is used by ATP synthase (Complex V) for ATP generation via the chemiosmotic coupling [91]. While the majority of oxygen molecules are used for water formation during the above processes, superoxide is generated at an estimated rate of 0.1–2% of oxygen consumption under normal respiration (State 3) and physiological operation of the respiratory chain [85, 88].

The electron transport chain may produce superoxide by multiple mechanisms but electron leakage before Complex III is suspected to represent the main source of superoxide in hyperglycemic endothelial cells [26, 83]. Complexes I and III are the respiratory complexes that are capable to produce large amounts of superoxide under certain conditions (**Figure 2**). Complex I may produce superoxide by two mechanisms: (1) the reduced flavin mononucleotide (FMN) center can transfer electrons to oxygen instead of CoQ when the NADH/NAD⁺ ratio is high (and the CoQ binding site is blocked or the CoQ pool is mostly reduced) and (2) by reverse electron transfer (RET) from the CoQ binding site if there is high electron supply from Complex II and the electrons are forced back to Complex I instead of proceeding to Complex III (by a reduced CoQ pool and high proton-motive force) [85, 92]. In Complex III, superoxide is produced from the semiquinone anionic state of CoQ (semiubiquinone) by directly reacting with oxygen instead of completing the Q-cycle [85, 93]. Reduced CoQ diffuses through the bilipid layer of the membrane to its binding site in Complex III and transfers the electrons to the iron-sulfur protein (Rieske protein) in two steps that produce a semiquinone intermediate state of CoQ after the first electron transfer, which is the source of superoxide. In the presence of respiratory inhibitors, Complex I may produce the highest amount of superoxide, especially through RET, but the contribution of Complexes I and III to superoxide production is unknown in healthy mitochondria [86]. Superoxide is also produced in the matrix by other enzymes that interact with the NADH pool and by enzymes connected to the inner membrane CoQ pool. These include α -ketoglutarate dehydrogenase that may produce superoxide if its substrate (α -ketoglutarate) concentration and the NADH/NAD⁺ ratio increase in the matrix. In the membrane, α -glycerophosphate dehydrogenase may produce superoxide partly via RET and Complex II, which transfer electrons from succinate to CoQ, is also suspected to generate some superoxide [85].

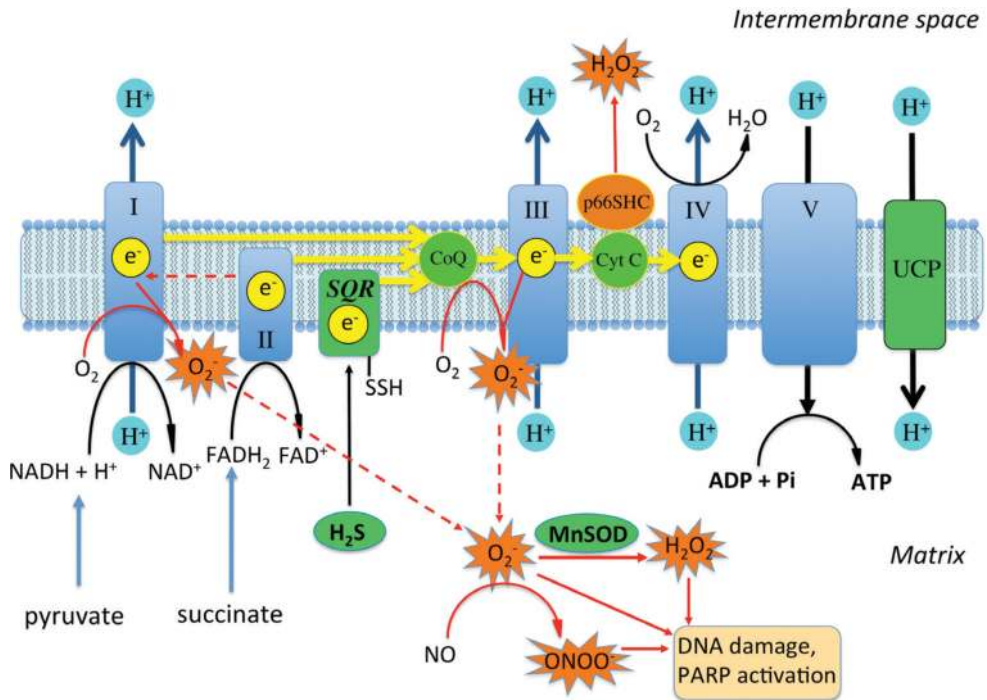


Figure 2. Oxidant production by the mitochondrial electron transport chain. CoQ: coenzyme Q, ubiquinone; Cyt C: cytochrome C; FAD+/FADH₂: flavin adenine dinucleotide; H₂O₂: hydrogen peroxide; MnSOD: manganese-dependent superoxide dismutase; NO[•]: nitric oxide; O₂^{-•}: superoxide, ONOO^{-•}: peroxynitrite; PARP: poly(ADP-ribose) polymerase; p66SHC: 66-kDa Src homology 2 domain-containing protein; SQR: sulfide:quinone oxidoreductase and UCP: uncoupling protein.

In hyperglycemic endothelial cells, the increased production of superoxide originates from the reduced CoQ pool before Complex III [75, 83]. The high electron donor input from glycolysis and the TCA cycle may increase the membrane potential and inhibit the electron transfer at Complex III, thus increase the concentration of reduced and free radical intermediates of CoQ. Superoxide generation may occur as direct ‘leakage’ of electrons to oxygen, as a result of the longer half-life of CoQ intermediates in the lipid bilayer and bound to Complex III or via RET through Complex I. Superoxide generation is also promoted by the increased membrane potential and proton concentration gradient through the inner membrane [31, 35, 83, 94]. Superoxide production was found to increase exponentially above 140 mV with the increase of the mitochondrial membrane potential [95]. Since with the generation of each superoxide molecule one electron is lost compared to the number of protons, superoxide production per se may increase the membrane potential and the proton gradient or might be responsible for the maintenance of the elevated membrane potential. Furthermore, the proton and charge transfer of Complexes III and IV are disproportional since Complex III picks up two protons from the matrix side of the inner membrane (the negatively charged N-face) and releases four

protons to the intermembrane space side (positively charged P-face), whereas Complex IV abstracts four protons from the matrix and releases two protons to the intermembrane space per transfer of two electrons. Thus, Complex III transfers four protons but only two positive charges, whereas Complex IV transfers two protons and four positive charges [89, 96], which may lead to an increase in the membrane potential if there is a mismatch between the activity of the two complexes. Also, while it is possible to generate considerably higher membrane potential than the physiological value, since the proton-motive force is sufficient to generate about 240 mV, the proton permeability of biological membranes increases above 130 mV; thus, the higher values are associated with energy loss [95]. To optimize the energy efficiency, OXPHOS is tightly regulated by the ATP concentration (or ATP/ADP ratio) in the matrix: high ATP concentration in the matrix allosterically inhibits Complex IV of the respiratory chain and decreases the mitochondrial membrane potential [97]. Complex IV has a low reserve capacity and it may represent the major controlling site of respiration and mitochondrial ATP synthesis [95]. This immediate regulation is supplemented by the phosphorylation-mediated regulation of respiratory complexes, which transmit the extramitochondrial and extracellular stimuli to adapt OXPHOS to stress conditions [95]. Phosphorylation sites were detected in all respiratory complexes and there is a growing list of stress factors that may induce phosphorylation of the complexes or mitochondrial hyperpolarization that might be associated with the adaptive process. This is how inflammatory cytokines may affect superoxide generation in diabetes.

Hyperglycemia-induced mitochondrial superoxide production is a functional change of the respiratory chain; no difference is detectable in the assembly or the relative amounts of the respiratory complexes in the early phases of the injury [26, 35]. At later stages, changes in the expression or assembly of some components of the respiratory chain may occur and these are typically associated with impaired functionality [98, 99]. The glucose-induced changes in the mitochondrial superoxide production are reversible: normalization of the membrane potential suppresses the ROS production in endothelial cells [26, 35, 83, 94, 100]. While elevated mitochondrial membrane potential is detectable in endothelial cells exposed to high glucose concentration, the overexpression of either uncoupling protein 1 (UCP1) or uncoupling protein 2 (UCP2) normalizes the membrane potential and reduces the ROS production [26, 35, 83]. The function of UCP2 is regulated by ROS itself: the proton conductance of the protein is controlled by glutathionylation, and if ROS is present, it increases the proton leakage, whereas in the absence of ROS, the channel closes, thus this feedback may control the mitochondrial potential and the ROS production simultaneously [32, 33]. Furthermore, hydrogen sulfide donors that normalize the mitochondrial potential by electron supplementation via sulfide:quinone oxidoreductase (SQR) also inhibit the superoxide generation induced by hyperglycemia [94, 100].

The mitochondrial matrix possesses antioxidant enzymes to defend against oxidative damage. Manganese-dependent superoxide dismutase (MnSOD, also known as superoxide dismutase 2 (SOD2)) is the mitochondrial enzyme that neutralizes superoxide produced by the respiratory chain and converts it to H_2O_2 . Since functional mitochondria constantly produce ROS, it is necessary to scavenge oxygen radicals. The importance of MnSOD is underlined by the fact that MnSOD-deficient mice exhibit extensive mitochondrial injury

and only survive for less than 3 weeks [101]. Mutations associated with reduced activity of MnSOD accelerate diabetic nephropathy and neuropathy [102–104]. On the other hand, overexpression of MnSOD prevents hyperglycemic injury in endothelial cells, suggesting that the respiratory chain is the source of oxidants in hyperglycemia [26, 83]. The amount of superoxide produced by the respiratory chain may not be excessively higher in hyperglycemia, since the overexpression of the MnSOD can efficiently scavenge the oxidants or low amounts of mitochondria-targeted antioxidants are able to neutralize ROS in hyperglycemia [26, 38, 83].

5. Mechanism of damage: cell damaging responses to ROS production in hyperglycemia

In cells exposed to hyperglycemia, mitochondrial ROS production activates various mechanisms to reduce the oxidant production. This includes immediate responses that may control the mitochondrial potential in the short term and also longer term responses that may protect against the increase of the mitochondrial potential, but these mostly reduce the energy efficiency of OXPHOS. Hyperglycemia and ROS production activate the uncoupling proteins in the mitochondrial inner membrane that allow higher proton transfer from the intermembrane space to the matrix without coupled ATP production [32, 33]. This activity not only reduces the mitochondrial membrane potential but also decreases the amount of ATP generated in the mitochondria.

Hyperglycemia also increases the consumption of hydrogen sulfide, an inorganic substrate of the mitochondria that can act as an endogenous electron donor [105–107]. Since H₂S oxidation may provide electrons to CoQ without the additional protons, it can reduce the mitochondrial potential and promote ATP synthesis; thus, H₂S may represent an alternative energy source that is used in small quantities or function as a buffer to control the mitochondrial potential. Hyperglycemia reduces the mitochondrial H₂S pool and the plasma concentration of H₂S, and it may deplete the buffering capacity of H₂S in the mitochondria [94, 108, 109].

These immediate reactions are supplemented with the morphological changes of mitochondria. Mitochondria are dynamically changing organelles in the cells: they may form long tubes that cross the whole length of the cell or short rods that are as long as wide or any length in between. Mitochondria continuously change their shape by fusion (elongation) and fission (fragmentation) and they move along microtubular tracks within the cells. This process is believed to help maintain functional mitochondria; it allows rapid redistribution of mitochondrial proteins and may help the elimination of dysfunctional parts or proteins. Hyperglycemia stimulates the fission of mitochondria that can reduce the mitochondrial membrane potential but also helps dissociate the respiratory complexes and decrease the chance of assembly of various proteins within a complex [110–114]. Altogether, it results in partly assembled respiratory complexes and higher superoxide production that will reduce the energy efficiency of mitochondria [98, 99]. Mitochondrial fission is a later process induced by high glucose exposure, and it occurs only after the superoxide production is induced.

Mitochondrial ROS production plays an active role in the initiation of fragmentation, since administration of a mitochondrial scavenger prevents the hyperglycemia-induced fission of mitochondria [113]. Blocking of mitochondrial fission will also restore the acetylcholine-mediated eNOS (endothelial nitric oxide synthase) phosphorylation and cGMP response in hyperglycemic endothelial cells, suggesting that the vascular impairment is partly caused by mitochondrial fission itself [114].

Mitochondrial ROS production results in DNA damage in the mitochondria that activates the mitochondrial DNA repair enzymes [115]. Oxidative DNA damage activates poly(ADP-ribose) polymerase 1 (PARP1) in the mitochondria similar to the situation in the nucleus [116]. PARP1 adds ADP-ribose polymers (PARs) to the mitochondrial base excision repair (BER) enzymes, *exo*/endonuclease G (EXOG) and DNA polymerase gamma (Poly γ) and affects the mitochondrial DNA repair [116]. Activation of mitochondrial PARP1, as opposed to nuclear PARP1, may decrease the DNA repair and slow down the mitochondrial biogenesis. Integrity of the mitochondrial DNA (mtDNA) also relies on mitochondrial transcription factor A (TFAM), a protein that may act as a physical shield of the mitochondrial DNA, since it forms histone-like structures with mtDNA and is present in large amounts in mitochondria (~900 molecules for each mtDNA). Apart from protecting the DNA from damaging agents, it tightly binds to heavily damaged DNA parts, blocks the transcription and may promote the repair of affected sites [115]. TFAM is also implicated in mitochondrial biogenesis and the maintenance of stable mtDNA copy number. In diabetic retinas, the level of TFAM is reduced, and it decreases the mitochondrial biogenesis that can lead to fewer mitochondria and less efficient OXPHOS [117].

Oxidant production will also induce several changes in the function of proteins that may be associated with cellular injury and result in altered cell metabolism, senescence and vascular dysfunction. Oxidative stress leads to oxidative DNA damage and DNA strand breaks that activates the predominantly nuclear PARP1 and may lead to ATP depletion and necrosis or apoptosis [118]. However, the level of PARP activation is mostly lower than to induce cell death; it results in higher NAD⁺ consumption and changes in the PARylation pattern of proteins [50]. The higher NAD⁺ utilization and decreased mitochondrial output may decrease the nuclear and cytoplasmic NAD⁺ concentrations and by reducing the amount of substrate for SIRT1 (another NAD⁺-dependent enzyme), it will block the deacetylation of proteins [67, 68, 82]. A third posttranslational modification that changes in hyperglycemia is protein S-sulfhydration (or persulfidation), a reaction between H₂S and reactive cysteine residues [119]. Protein S-sulfhydration is a highly prevalent modification that typically increases the activity of target proteins. The antioxidant master regulator Nrf2 (nuclear factor E2-related factor 2) transcription factor is also activated by H₂S via sulfhydration of its key controller, Kelch-like erythroid cell-derived protein with Cap 'n' collar (CNC) homology (ECH)-associated protein 1 (Keap1) [120, 121]. A further target is ATP synthase in the respiratory chain: H₂S increases cellular bioenergetics via S-sulfhydration of Complex V [122]. Since hyperglycemia reduces the H₂S level in the cells and plasma, it will also decrease the protein S-sulfhydration and results in lower Nrf2 activity and OXPHOS efficiency [108, 109]. All these changes contribute to the dysfunction of proteins in hyperglycemia and promote cellular dysfunction.

There are further changes in the cellular metabolism that reduce the ATP output, which include diminished glucose uptake, blockage of anaerobic metabolism and inappropriate assembly of mitochondrial respiratory complexes. High extracellular glucose immediately stimulates glucose uptake, but decreases the glucose transport over longer term in endothelial cells [123, 124]. Downregulation of GLUT1 glucose transporter is responsible for the diminished glucose uptake, and it may contribute to the low ATP output. Hyperglycemia reduces the activity of the glycolytic enzyme glyceraldehyde-3-phosphate dehydrogenase (GAPDH) via PARylation and reduces the anaerobic glucose metabolism [125]. Aerobic metabolism is also decreased by mitochondrial fragmentation and disassembly of mitochondrial respiratory complexes that develop over longer exposure to hyperglycemia [93, 99, 113]. Altogether these changes reduce the ATP generation in the cells and block the anaerobic compensation for the diminished mitochondrial activity.

Oxidative stress will induce DNA strand breaks in the mitochondria and promote mutations and senescence of endothelial cells. Accelerated aging of endothelial cells and the lack of endothelial progenitor cells decrease the functional endothelial cell pool in hyperglycemia [126]. The number of bone marrow-derived progenitor cells is lower in the circulation in diabetes and the progenitor cells possess diminished proliferation capacity [24, 127]. It will reduce the resupply of endothelial cells and may place extra workload on the pre-existing vascular endothelium extending the exposure to glucose, inflammatory mediators and oxidants.

Vascular dysfunction is characterized by inappropriate relaxation in response to acetylcholine, which is mediated by endothelial nitric oxide (NO) [128–131]. NO is synthesized from the guanidinium group of L-arginine by eNOS via a NADPH-dependent reaction. Mitochondrial superoxide may interact with NO, which leads to a loss of bioavailable NO, and form peroxynitrite (ONOO⁻), a very reactive radical that activates PARP1 [132–134]. Furthermore, tetrahydrobiopterin (the pteridine cofactor of eNOS) is an essential regulator of the enzyme: when tetrahydrobiopterin availability is inadequate, it becomes ‘uncoupled’ and produces superoxide, using molecular oxygen as substrate, instead of NO [135]. Tetrahydrobiopterin levels are lower in animal models of diabetes and tetrahydrobiopterin supplementation restores the vascular relaxation in these models suggesting a pathogenic role in diabetes [136, 137]. Another key element of vascular dysfunction is the reduced H₂S bioavailability in diabetes. H₂S and NO interact at multiple levels: H₂S stimulates eNOS expression and activity, promotes the action of NO by maintaining a reduced soluble guanylate cyclase (sGC) and by inhibition of the vascular cGMP phosphodiesterase (PDE5) and prolongs the half-life of cGMP [138–140]. Increased mitochondrial H₂S consumption and its diminished concentration in hyperglycemic endothelial cells inhibit the NO-dependent vasodilation and contribute to vascular damage in diabetes.

6. Potential therapeutic approaches

6.1. Therapeutic approaches targeting the mitochondria

Glycemic control has been the main therapeutic modality for prevention and treatment of hyperglycemic injury and diabetes complications. However, recent studies confirmed that

glycemic control provides limited protection against the cardiovascular events, and adjunct therapy is necessary to reduce the risk of complications. Previous efforts found aldose reductase (a key enzyme of the polyol pathway) to serve as potential drug target and found that inhibition of aldose reductase may prevent the pathological changes that occur in response to high sorbitol levels [141]. The results of the clinical trials were less impressive than expected from preclinical studies, still the first aldose reductase inhibitor has been marketed in Asia for the treatment of diabetes complications [142].

Following the discovery that mitochondrial superoxide is responsible for the induction of all ROS-producing pathways in hyperglycemic endothelial cells, an intense search began for mitochondrial drug targets and inhibitors of mitochondrial superoxide generation [26, 83, 84]. Mitochondria-specific targeting moieties have been developed and linked to antioxidants or superoxide dismutase (SOD) mimetics [143, 144]. The majority of these molecules use the triphenylphosphonium (TPP) targeting group and attain 100- to 500-fold accumulation in the mitochondria [145, 146]. Both the mitochondria-targeted ubiquinol (MitoQ) and piperidine nitroxide TEMPO (mitoTEMPO) proved beneficial in diabetes models [147–149]. Overexpression of MnSOD was found to protect against diabetic retinopathy in a transgenic model, but long-term delivery of MnSOD is unresolved in humans [150].

While no protein target has been identified, various phenotypic screens were performed, which allowed the target-agnostic discovery of potential drug candidates [38, 151]. In cell-based models, paroxetine emerged as a mitochondrial free radical scavenger and glucocorticoid steroids as UCP2 inducers in hyperglycemic endothelial cells [35, 38]. In another screen, which also used multiple assay variables as output and examined the OXPHOS-associated gene expression, the antihelminthic drug mebendazole and the Chinese herbal medicine deoxysappanone B emerged as inhibitors of mitochondrial ROS production [151]. The protective effect of all of these drugs might be a direct consequence of the normalization of the mitochondrial membrane potential or free radical scavenging.

The mitochondrial antioxidant effect of select microtubular drugs, which was independently confirmed by the previous two studies, might be related to their mitochondrial fusion promoting effect, since excessive mitochondrial fission and fragmentation occur in hyperglycemia [38, 151]. To identify compounds that promote mitochondrial fusion, a separate phenotypic screening program was conducted [152]. This study identified hydrazone M1, a small molecule that restore the mitochondrial network in cells but its efficacy has not been tested in diabetes [152, 153]. Also, compounds that block the mitochondrial fission are expected to improve the mitochondrial function and reduce the mitochondrial ROS production in hyperglycemia, but these inhibitors (mitochondrial division inhibitor-1 (mdivi-1), dynasore, P110 and 15-oxospiramylactone) have not been tested in diabetes [154, 155].

In another effort to identify compounds that reduce the mitochondrial ROS production but do not interfere with energy production, isolated mitochondria were used for high throughput screening and hit compounds were selected based on a dual output of ROS production and respiration rate [156, 157]. CN-POBS (N-cyclohexyl-4-(4-nitrophenoxy)benzenesulfonamide)

was identified as a selective inhibitor of ROS production by the ubiquinone-binding site of complex I, and S3QELs (“sequels,” selective suppressors of site III_{OQ} electron leak) were found to act as inhibitors of the outer ubiquinone-binding site similar to terpestacin [156–158]. Unfortunately, there are no data about their action against hyperglycemia-induced ROS production. Statins also block the mitochondrial ROS production but they simultaneously reduce the mitochondrial respiration and may cause toxicity [38, 151]. A further inhibitor of mitochondrial respiration is H₂S, a known inhibitor of complex IV, that turns out to act as stimulator of mitochondrial metabolism at low concentrations via electron donation [106]. H₂S supplementation either using sodium sulfide or mitochondria-targeted donor molecules inhibits the hyperglycemia-induced ROS production and endothelial dysfunction at low concentrations [35, 94]. Long-term administration of H₂S is effective against diabetic nephropathy and retinopathy in animal models [159, 160].

Finally, many of the currently used anti-diabetic medications also possess mitochondrial targets and they might be partly responsible for their beneficial effects on endothelial cells and the vasculature. The biguanide metformin apart from activating AMPK also acts as a mild and transient inhibitor of respiratory complex I [161]. The sulfonylurea glibenclamide inhibits the mitochondrial ATP-sensitive potassium channel (mitoK_{ATP}), decreases the mitochondrial membrane potential and ROS production and increases the respiration rate [162, 163]. Thiazolidinediones (TZDs) also possess a specific mitochondrial target (mTOT, mitochondrial target of TZDs), which comprise a recently identified protein complex. TZDs bind to a pyruvate carrier complex in the mitochondria and modulate the pyruvate entry into the mitochondria that may explain their antioxidant effect [164]. The discovery of these novel mitochondrial targets is expected to promote target-based drug discovery efforts and may provide new compounds in the upcoming years.

6.2. Therapeutic approaches to replace the injured endothelial cells

Endothelial cells exposed to oxidative stress and the proinflammatory environment undergo accelerated aging in hyperglycemia, thus stimulation of cell replacement with fresh endothelial cells may help restore the vascular function [126]. While it is difficult to estimate the exact number of endothelial cells, a reduction of progenitor cell count and functionality was detected in diabetes, and it is expected to result in a decreased number of functional endothelial cells in the vasculature [24, 127]. Even in the retina, where neovascularization (proliferative diabetic retinopathy) is the characteristic event, progenitor cell therapy is expected to cause improvement and treat the ischemic vascular abnormalities [165]. Currently, it is difficult to predict which treatment strategy will prove effective in diabetes, but probably the drug-induced enhancement of progenitor cell potency has the highest translational potential in diabetes [166, 167]. Drugs that were suggested for progenitor cell enhancement include statins, losartan (angiotensin II receptor antagonist), aliskiren (direct renin inhibitor), hydrogen sulfide, thymosin β 4 and the CXCR4 (C-X-C chemokine receptor type 4) antagonist plerixafor (AMD3100, 1,1-[1,4-Phenylenebis(methylene)]bis-1,4,8,11-tetraazacyclotetradecane) [167]. As some of these drugs are in use in diabetic patients, an evaluation of the effect of these compounds on diabetic progenitor cells might be available in the near

future [168]. If mobilization and enhancement of endothelial progenitor cells are achieved, it could help the endothelial recovery in the vasculature in diabetic patients, which may lead to an extension of indication of these drugs.

7. Conclusion

Reversible changes occur in the early phase of hyperglycemic injury that might be pharmacologically targetable. Blocking the high glucose-induced mitochondrial superoxide production represents the major goal in endothelial cells, but it does not provide a drug target that can be directly assessed [169, 170]. The involvement of mitochondria in the pathogenesis of various diseases intensified the interest in druggable targets and promoted selective delivery of compounds to the mitochondria [146]. Normalization of the mitochondrial membrane potential or administration of mitochondria-specific free radical scavengers reverses the adverse effects of hyperglycemia and may present experimental therapeutic approaches in diabetes [16, 38, 100]. Early administration of mitochondrial antioxidants or drugs that restore the mitochondrial metabolism is expected to prevent the later changes that occur in diabetes.

The later stages of hyperglycemic injury also include morphological changes and impaired assembly of the respiratory complexes that necessitate different treatment strategies. Mitochondrial fusion promoting drugs might represent promising approaches in this phase of diabetes complications but their efficacy has not been tested in diabetes [152, 153]. Alternatively, stimulation of the endothelial progenitor cells to help replace the senescent endothelial cells may prove beneficial in diabetes [126].

Altogether, advancement in our understanding of glucose-induced cellular and mitochondrial damage and identification of new drug targets are expected to provide novel strategies in diabetes treatment.

Acknowledgements

D.G. received funding from the People Programme (Marie Curie Actions) of the European Union's Seventh Framework Programme under the grant agreement number 628100.

Author details

Domokos Gero^{1,2*}

*Address all correspondence to: gerodomokos@yahoo.com

1 Institute of Pathophysiology, Semmelweis University Medical School, Budapest, Hungary

2 University of Exeter Medical School, Exeter, UK

References

- [1] Roglic G, World Health Organization, Global report on diabetes. Geneva, Switzerland: World Health Organization; 2016. 86 p
- [2] Tamayo T et al. The prevalence and incidence of diabetes in Germany. *Deutsches Ärzteblatt International*. 2016;**113**(11):177-182
- [3] Ulrich S et al. Cost burden of type 2 diabetes in Germany: Results from the population-based KORA studies. *BMJ Open*. 2016;**6**(11):e012527
- [4] Hex N et al. Estimating the current and future costs of Type 1 and Type 2 diabetes in the UK, including direct health costs and indirect societal and productivity costs. *Diabetic Medicine*. 2012;**29**(7):855-862
- [5] Brown JB et al. Type 2 diabetes: Incremental medical care costs during the first 8 years after diagnosis. *Diabetes Care*. 1999;**22**(7):1116-1124
- [6] Hadi HA, Suwaidi JA. Endothelial dysfunction in diabetes mellitus. *Vascular Health and Risk Management*. 2007;**3**(6):853-876
- [7] Georgescu A. Vascular dysfunction in diabetes: The endothelial progenitor cells as new therapeutic strategy. *World Journal of Diabetes*. 2011;**2**(6):92-97
- [8] Esper RJ et al. Endothelial dysfunction: A comprehensive appraisal. *Cardiovascular Diabetology*. 2006;**5**:4
- [9] Raitakari OT, Celermajer DS. Flow-mediated dilatation. *British Journal of Clinical Pharmacology*. 2000;**50**(5):397-404
- [10] De Vriese AS et al. Endothelial dysfunction in diabetes. *British Journal of Pharmacology*. 2000;**130**(5):963-974
- [11] Montero D et al. Vascular smooth muscle function in type 2 diabetes mellitus: A systematic review and meta-analysis. *Diabetologia*. 2013;**56**(10):2122-2133
- [12] Bakker W et al. Endothelial dysfunction and diabetes: Roles of hyperglycemia, impaired insulin signaling and obesity. *Cell and Tissue Research*. 2009;**335**(1):165-189
- [13] Artwohl M et al. Insulin does not regulate glucose transport and metabolism in human endothelium. *European Journal of Clinical Investigation*. 2007;**37**(8):643-650
- [14] Eelen G et al. Endothelial cell metabolism in normal and diseased vasculature. *Circulation Research*. 2015;**116**(7):1231-1244
- [15] Giacco F, Brownlee M. Oxidative stress and diabetic complications. *Circulation Research*. 2010;**107**(9):1058-1070
- [16] Quijano C et al. Enhanced mitochondrial superoxide in hyperglycemic endothelial cells: Direct measurements and formation of hydrogen peroxide and peroxynitrite. *American Journal of Physiology. Heart and Circulatory Physiology*. 2007;**293**(6):H3404-H3414

- [17] Coppey LJ et al. Effect of antioxidant treatment of streptozotocin-induced diabetic rats on endoneurial blood flow, motor nerve conduction velocity, and vascular reactivity of epineurial arterioles of the sciatic nerve. *Diabetes*. 2001;**50**(8):1927-1937
- [18] Haj-Yehia AI et al. Effects of the superoxide dismutase-mimic compound TEMPOL on oxidant stress-mediated endothelial dysfunction. *Antioxidants & Redox Signaling*. 1999;**1**(2):221-232
- [19] Ceriello A. Diabetic complications: From oxidative stress to inflammatory cardiovascular disorders. *Medicographia*. 2011;**33**(1):29-34
- [20] Maeda M et al. Intermittent high glucose implements stress-induced senescence in human vascular endothelial cells: Role of superoxide production by NADPH oxidase. *PLoS One*. 2015;**10**(4):e0123169
- [21] Galley HF, Webster NR. Physiology of the endothelium. *British Journal of Anaesthesia*. 2004;**93**(1):105-113
- [22] Patrick V, Lepore J. Blood vessels and the endothelium. In: Warrell DA, Cox TM, Firth JD, editors. *Oxford Textbook of Medicine*. Oxford, UK: Oxford University Press; 2010
- [23] Bianconi E et al. An estimation of the number of cells in the human body. *Annals of Human Biology*. 2013;**40**(6):463-471
- [24] Loomans CJ et al. Endothelial progenitor cell dysfunction: A novel concept in the pathogenesis of vascular complications of type 1 diabetes. *Diabetes*. 2004;**53**(1):195-199
- [25] Rogers SC et al. Exposure to high or low glucose levels accelerates the appearance of markers of endothelial cell senescence and induces dysregulation of nitric oxide synthase. *The Journals of Gerontology. Series A, Biological Sciences and Medical Sciences*. 2013;**68**(12):1469-1481
- [26] Brownlee M. The pathobiology of diabetic complications: A unifying mechanism. *Diabetes*. 2005;**54**(6):1615-1625
- [27] Calcutt NA et al. Therapies for hyperglycaemia-induced diabetic complications: From animal models to clinical trials. *Nature Reviews. Drug Discovery*. 2009;**8**(5):417-429
- [28] McCall MN et al. MicroRNA profiling of diverse endothelial cell types. *BMC Medical Genomics*. 2011;**4**:78
- [29] Heilig CW et al. Overexpression of glucose transporters in rat mesangial cells cultured in a normal glucose milieu mimics the diabetic phenotype. *The Journal of Clinical Investigation*. 1995;**96**(4):1802-1814
- [30] Kaiser N et al. Differential regulation of glucose transport and transporters by glucose in vascular endothelial and smooth muscle cells. *Diabetes*. 1993;**42**(1):80-89
- [31] Korshunov SS, Skulachev VP, Starkov AA. High protonic potential actuates a mechanism of production of reactive oxygen species in mitochondria. *FEBS Letters*. 1997;**416**(1):15-18

- [32] Mailloux RJ, Harper ME. Uncoupling proteins and the control of mitochondrial reactive oxygen species production. *Free Radical Biology & Medicine*. 2011;**51**(6):1106-1115
- [33] Mailloux RJ, Harper ME. Mitochondrial proticity and ROS signaling: Lessons from the uncoupling proteins. *Trends in Endocrinology and Metabolism*. 2012;**23**(9):451-458
- [34] Koziel A et al. The influence of high glucose on the aerobic metabolism of endothelial EA.hy926 cells. *Pflügers Archiv*. 2012;**464**(6):657-669
- [35] Gero D, Szabo C. Glucocorticoids suppress mitochondrial oxidant production via upregulation of uncoupling protein 2 in hyperglycemic endothelial cells. *PLoS One*. 2016;**11**(4):e0154813
- [36] Busik JV, Mohr S, Grant MB. Hyperglycemia-induced reactive oxygen species toxicity to endothelial cells is dependent on paracrine mediators. *Diabetes*. 2008;**57**(7):1952-1965
- [37] Engerman R, Bloodworth JM Jr, Nelson S. Relationship of microvascular disease in diabetes to metabolic control. *Diabetes*. 1977;**26**(8):760-769
- [38] Gero D et al. Cell-based screening identifies paroxetine as an inhibitor of diabetic endothelial dysfunction. *Diabetes*. 2013;**62**(3):953-964
- [39] Davidson SM, Yellon DM. Does hyperglycemia reduce proliferation or increase apoptosis? *Am J Physiol Heart Circ Physiol*. 2006;**291**(3):H1486 author reply H1487
- [40] Cheng AY, Leiter LA. Glucose lowering and cardiovascular disease: What do we know and what should we do? *European Journal of Cardiovascular Prevention and Rehabilitation*. 2010;**17**(Suppl 1):S25-S31
- [41] UK Prospective Diabetes Study (UKPDS) Group. Intensive blood-glucose control with sulphonylureas or insulin compared with conventional treatment and risk of complications in patients with type 2 diabetes (UKPDS 33). *Lancet*. 1998;**352**(9131):837-853
- [42] Harris MI. Classification, Diagnostic Criteria, and Screening for Diabetes. In: Harris MI et al., editors. *Diabetes in America*. Chapter 2, pages 15-36, NIH publication 95-168 (Published by NIH/NIDDK, Bethesda, MD). 1995
- [43] Powers MA et al. Diabetes Self-management education and support in Type 2 diabetes: A joint position statement of the American Diabetes Association, the American Association of Diabetes Educators, and the Academy of Nutrition and Dietetics. *Diabetes Care*. 2015;**38**(7):1372-1382
- [44] Si D et al. Comparison of diabetes management in five countries for general and indigenous populations: An internet-based review. *BMC Health Services Research*. 2010;**10**:169
- [45] Hammes HP et al. Diabetic retinopathy: Targeting vasoregression. *Diabetes*. 2011;**60**(1):9-16
- [46] WHO Expert Committee on Diabetes Mellitus: Second report. World Health Organization Technical Report Series. 1980;**646**:1-80

- [47] Alberti KG, Zimmet PZ. Definition, diagnosis and classification of diabetes mellitus and its complications. Part 1: Diagnosis and classification of diabetes mellitus provisional report of a WHO consultation. *Diabetic Medicine*. 1998;**15**(7):539-553
- [48] Felig P, Wahren J, Hendler R. Influence of oral glucose ingestion on splanchnic glucose and gluconeogenic substrate metabolism in man. *Diabetes*. 1975;**24**(5):468-475
- [49] Bonora E, Muggeo M. Postprandial blood glucose as a risk factor for cardiovascular disease in Type II diabetes: The epidemiological evidence. *Diabetologia*. 2001;**44**(12):2107-2114
- [50] Horvath EM et al. Rapid 'glycaemic swings' induce nitrosative stress, activate poly(ADP-ribose) polymerase and impair endothelial function in a rat model of diabetes mellitus. *Diabetologia*. 2009;**52**(5):952-961
- [51] Ihnat MA, Thorpe JE, Ceriello A. Hypothesis: The 'metabolic memory', the new challenge of diabetes. *Diabetic Medicine*. 2007;**24**(6):582-586
- [52] Ihnat MA et al. Reactive oxygen species mediate a cellular 'memory' of high glucose stress signalling. *Diabetologia*. 2007;**50**(7):1523-1531
- [53] Skyler JS et al. Intensive glycemic control and the prevention of cardiovascular events: Implications of the ACCORD, ADVANCE, and VA diabetes trials: A position statement of the American Diabetes Association and a scientific statement of the American College of Cardiology Foundation and the American Heart Association. *Circulation*. 2009;**119**(2):351-357
- [54] Diabetes Control Complications Trial Research Group, et al. The effect of intensive treatment of diabetes on the development and progression of long-term complications in insulin-dependent diabetes mellitus. *The New England Journal of Medicine*. 1993;**329**(14):977-986
- [55] Kowluru RA, Kanwar M, Kennedy A. Metabolic memory phenomenon and accumulation of peroxynitrite in retinal capillaries. *Experimental Diabetes Research*. 2007;**2007**:21976
- [56] Kowluru RA. Effect of reinstatement of good glycemic control on retinal oxidative stress and nitrate stress in diabetic rats. *Diabetes*. 2003;**52**(3):818-823
- [57] Galderisi A et al. Metabolomics reveals new metabolic perturbations in children with type 1 diabetes. *Pediatric Diabetes*. 2017. DOI: 10.1111/pedi.12524
- [58] Padberg I et al. A new metabolomic signature in type-2 diabetes mellitus and its pathophysiology. *PLoS One*. 2014;**9**(1):e85082
- [59] Li M et al. GC/TOFMS analysis of metabolites in serum and urine reveals metabolic perturbation of TCA cycle in db/db mice involved in diabetic nephropathy. *American Journal of Physiology. Renal Physiology*. 2013;**304**(11):F1317-F1324
- [60] Sas KM et al. Metabolomics and diabetes: Analytical and computational approaches. *Diabetes*. 2015;**64**(3):718-732

- [61] Yuan W et al. Amine metabolomics of hyperglycemic endothelial cells using capillary LC-MS with isobaric tagging. *Journal of Proteome Research*. 2011;**10**(11):5242-5250
- [62] Krutzfeldt A et al. Metabolism of exogenous substrates by coronary endothelial cells in culture. *Journal of Molecular and Cellular Cardiology*. 1990;**22**(12):1393-1404
- [63] Harjes U, Bensaad K, Harris AL. Endothelial cell metabolism and implications for cancer therapy. *British Journal of Cancer*. 2012;**107**(8):1207-1212
- [64] Dagher Z et al. Acute regulation of fatty acid oxidation and amp-activated protein kinase in human umbilical vein endothelial cells. *Circulation Research*. 2001;**88**(12):1276-1282
- [65] Noyman I et al. Hyperglycemia reduces nitric oxide synthase and glycogen synthase activity in endothelial cells. *Nitric Oxide*. 2002;**7**(3):187-193
- [66] Goveia J, Stapor P, Carmeliet P. Principles of targeting endothelial cell metabolism to treat angiogenesis and endothelial cell dysfunction in disease. *EMBO Molecular Medicine*. 2014;**6**(9):1105-1120
- [67] Yu J, Auwerx J. Protein deacetylation by SIRT1: An emerging key post-translational modification in metabolic regulation. *Pharmacological Research*. 2010;**62**(1):35-41
- [68] Zheng Z et al. Sirtuin 1-mediated cellular metabolic memory of high glucose via the LKB1/AMPK/ROS pathway and therapeutic effects of metformin. *Diabetes*. 2012;**61**(1):217-228
- [69] Ruderman NB et al. AMPK and SIRT1: A long-standing partnership? *American Journal of Physiology. Endocrinology and Metabolism*. 2010;**298**(4):E751-E760
- [70] Canto C, Auwerx J. Targeting sirtuin 1 to improve metabolism: All you need is NAD(+)? *Pharmacological Reviews*. 2012;**64**(1):166-187
- [71] Saha AK et al. Insulin resistance due to nutrient excess: Is it a consequence of AMPK downregulation? *Cell Cycle*. 2011;**10**(20):3447-3451
- [72] Saha AK et al. Downregulation of AMPK accompanies leucine- and glucose-induced increases in protein synthesis and insulin resistance in rat skeletal muscle. *Diabetes*. 2010;**59**(10):2426-2434
- [73] Houtkooper RH, Pirinen E, Auwerx J. Sirtuins as regulators of metabolism and healthspan. *Nature Reviews. Molecular Cell Biology*. 2012;**13**(4):225-238
- [74] Rodgers JT et al. Nutrient control of glucose homeostasis through a complex of PGC-1alpha and SIRT1. *Nature*. 2005;**434**(7029):113-118
- [75] Brownlee M. Biochemistry and molecular cell biology of diabetic complications. *Nature*. 2001;**414**(6865):813-820
- [76] Leopold JA et al. Glucose-6-phosphate dehydrogenase overexpression decreases endothelial cell oxidant stress and increases bioavailable nitric oxide. *Arteriosclerosis, Thrombosis, and Vascular Biology*. 2003;**23**(3):411-417

- [77] Zhang Z et al. Increasing glucose 6-phosphate dehydrogenase activity restores redox balance in vascular endothelial cells exposed to high glucose. *PLoS One*. 2012;**7**(11):e49128
- [78] Ramasamy R, Yan SF, Schmidt AM. Receptor for AGE (RAGE): Signaling mechanisms in the pathogenesis of diabetes and its complications. *Annals of the New York Academy of Sciences*. 2011;**1243**:88-102
- [79] Menini S et al. Deletion of p66Shc longevity gene protects against experimental diabetic glomerulopathy by preventing diabetes-induced oxidative stress. *Diabetes*. 2006;**55**(6):1642-1650
- [80] Camici GG et al. Genetic deletion of p66(Shc) adaptor protein prevents hyperglycemia-induced endothelial dysfunction and oxidative stress. *Proceedings of the National Academy of Sciences of the United States of America*. 2007;**104**(12):5217-5222
- [81] Giorgio M et al. Electron transfer between cytochrome c and p66Shc generates reactive oxygen species that trigger mitochondrial apoptosis. *Cell*. 2005;**122**(2):221-233
- [82] Kumar S et al. Sirtuin1-regulated lysine acetylation of p66Shc governs diabetes-induced vascular oxidative stress and endothelial dysfunction. *Proceedings of the National Academy of Sciences of the United States of America*. 2017;**114**(7):1714-1719
- [83] Nishikawa T et al. Normalizing mitochondrial superoxide production blocks three pathways of hyperglycaemic damage. *Nature*. 2000;**404**(6779):787-790
- [84] Nishikawa T, Edelstein D, Brownlee M. The missing link: A single unifying mechanism for diabetic complications. *Kidney International*. Supplement. 2000;**77**:S26-S30
- [85] Murphy MP. How mitochondria produce reactive oxygen species. *The Biochemical Journal*. 2009;**417**(1):1-13
- [86] Turrens JF. Mitochondrial formation of reactive oxygen species. *The Journal of Physiology*. 2003;**552**(Pt 2):335-344
- [87] Rus DA et al. Induction of mitochondrial xanthine oxidase activity during apoptosis in the rat mammary gland. *Frontiers in Bioscience*. 2007;**12**:1184-1189
- [88] Kluge MA, Fetterman JL, Vita JA. Mitochondria and endothelial function. *Circulation Research*. 2013;**112**(8):1171-1188
- [89] Dzbek J, Korzeniewski B. Control over the contribution of the mitochondrial membrane potential ($\Delta\psi$) and proton gradient (ΔpH) to the protonmotive force ($\Delta\mu$). In silico studies. *The Journal of Biological Chemistry*. 2008;**283**(48):33232-33239
- [90] Kunz W et al. Kinetic limitations in the overall reaction of mitochondrial oxidative phosphorylation accounting for flux-dependent changes in the apparent $\Delta\text{G}_{\text{P}}/\Delta\mu_{\text{H}^+}$ ratio. *FEBS Letters*. 1988;**233**(1):17-21
- [91] Mitchell P. Coupling of phosphorylation to electron and hydrogen transfer by a chemiosmotic type of mechanism. *Nature*. 1961;**191**:144-148

- [92] Treberg JR, Quinlan CL, Brand MD. Evidence for two sites of superoxide production by mitochondrial NADH-ubiquinone oxidoreductase (complex I). *The Journal of Biological Chemistry*. 2011;**286**(31):27103-27110
- [93] Bleier L, Droese S. Superoxide generation by complex III: From mechanistic rationales to functional consequences. *Biochimica et Biophysica Acta*. 2013;**1827**(11-12):1320-1331
- [94] Suzuki K et al. Hydrogen sulfide replacement therapy protects the vascular endothelium in hyperglycemia by preserving mitochondrial function. *Proceedings of the National Academy of Sciences of the United States of America*. 2011;**108**(33):13829-13834
- [95] Kadenbach B et al. New extension of the Mitchell Theory for oxidative phosphorylation in mitochondria of living organisms. *Biochimica et Biophysica Acta*. 2010;**1800**(3):205-212
- [96] Nicholls DG, Ferguson SJ. *Bioenergetics 3*. 3rd ed. San Diego, CA: Academic Press. xviii; 2002. p. 297
- [97] Ramzan R et al. Mitochondrial respiration and membrane potential are regulated by the allosteric ATP-inhibition of cytochrome c oxidase. *Biochimica et Biophysica Acta*. 2010;**1797**(9):1672-1680
- [98] Ferreira FM et al. Diabetes and mitochondrial bioenergetics: Alterations with age. *Journal of Biochemical and Molecular Toxicology*. 2003;**17**(4):214-222
- [99] Munusamy S et al. Alteration of renal respiratory Complex-III during experimental type-1 diabetes. *BMC Endocrine Disorders*. 2009;**9**:2
- [100] Gero D et al. The novel mitochondria-targeted hydrogen sulfide (H₂S) donors AP123 and AP39 protect against hyperglycemic injury in microvascular endothelial cells in vitro. *Pharmacological Research*. 2016;**113**(Pt A):186-198
- [101] Lebovitz RM et al. Neurodegeneration, myocardial injury, and perinatal death in mitochondrial superoxide dismutase-deficient mice. *Proceedings of the National Academy of Sciences of the United States of America*. 1996;**93**(18):9782-9787
- [102] Nishi H et al. DNA typing of HLA class II genes in Japanese patients with dilated cardiomyopathy. *Journal of Molecular and Cellular Cardiology*. 1995;**27**(10):2385-2392
- [103] Nomiyama T et al. The polymorphism of manganese superoxide dismutase is associated with diabetic nephropathy in Japanese type 2 diabetic patients. *Journal of Human Genetics*. 2003;**48**(3):138-141
- [104] Vincent AM et al. SOD2 protects neurons from injury in cell culture and animal models of diabetic neuropathy. *Experimental Neurology*. 2007;**208**(2):216-227
- [105] Hildebrandt TM, Grieshaber MK. Three enzymatic activities catalyze the oxidation of sulfide to thiosulfate in mammalian and invertebrate mitochondria. *The FEBS Journal*. 2008;**275**(13):3352-3361

- [106] Modis K et al. Intramitochondrial hydrogen sulfide production by 3-mercaptopyruvate sulfurtransferase maintains mitochondrial electron flow and supports cellular bioenergetics. *The FASEB Journal*. 2013;**27**(2):601-611
- [107] Szabo C et al. Poly(ADP-ribose) polymerase inhibitors ameliorate nephropathy of type 2 diabetic Leprdb/db mice. *Diabetes*. 2006;**55**(11):3004-3012
- [108] Jain SK et al. Low levels of hydrogen sulfide in the blood of diabetes patients and streptozotocin-treated rats causes vascular inflammation? *Antioxidants & Redox Signaling*. 2010;**12**(11):1333-1337
- [109] Suzuki K et al. Clinical implication of plasma hydrogen sulfide levels in Japanese patients with Type 2 diabetes. *Internal Medicine*. 2017;**56**(1):17-21
- [110] Wang W et al. Mitochondrial fission triggered by hyperglycemia is mediated by ROCK1 activation in podocytes and endothelial cells. *Cell Metabolism*. 2012;**15**(2):186-200
- [111] Yu T, Jhun BS, Yoon Y. High-glucose stimulation increases reactive oxygen species production through the calcium and mitogen-activated protein kinase-mediated activation of mitochondrial fission. *Antioxidants & Redox Signaling*. 2011;**14**(3):425-437
- [112] Yu T, Robotham JL, Yoon Y. Increased production of reactive oxygen species in hyperglycemic conditions requires dynamic change of mitochondrial morphology. *Proceedings of the National Academy of Sciences of the United States of America*. 2006;**103**(8):2653-2658
- [113] Makino A, Scott BT, Dillmann WH. Mitochondrial fragmentation and superoxide anion production in coronary endothelial cells from a mouse model of type 1 diabetes. *Diabetologia*. 2010;**53**(8):1783-1794
- [114] Shenouda SM et al. Altered mitochondrial dynamics contributes to endothelial dysfunction in diabetes mellitus. *Circulation*. 2011;**124**(4):444-453
- [115] Larsen NB, Rasmussen M, Rasmussen LJ. Nuclear and mitochondrial DNA repair: Similar pathways? *Mitochondrion*. 2005;**5**(2):89-108
- [116] Szczesny B et al. Opposing roles of mitochondrial and nuclear PARP1 in the regulation of mitochondrial and nuclear DNA integrity: Implications for the regulation of mitochondrial function. *Nucleic Acids Research*. 2014;**42**(21):13161-13173
- [117] Santos JM et al. Mitochondrial biogenesis and the development of diabetic retinopathy. *Free Radical Biology & Medicine*. 2011;**51**(10):1849-1860
- [118] Gero D, Szabo C. Poly(ADP-ribose) polymerase: A new therapeutic target? *Current Opinion in Anaesthesiology*. 2008;**21**(2):111-121
- [119] Paul BD, Snyder SH. H(2)S signalling through protein sulfhydration and beyond. *Nature Reviews. Molecular Cell Biology*. 2012;**13**(8):499-507
- [120] Xie L et al. Hydrogen sulfide induces Keap1 S-sulfhydration and suppresses diabetes-accelerated atherosclerosis via Nrf2 activation. *Diabetes*. 2016;**65**(10):3171-3184

- [121] Nguyen T, Nioi P, Pickett CB. The Nrf2-antioxidant response element signaling pathway and its activation by oxidative stress. *The Journal of Biological Chemistry*. 2009; **284**(20):13291-13295
- [122] Modis K et al. S-Sulphydration of ATP synthase by hydrogen sulfide stimulates mitochondrial bioenergetics. *Pharmacological Research*. 2016; **113**(Pt A):116-124
- [123] Alpert E et al. Delayed autoregulation of glucose transport in vascular endothelial cells. *Diabetologia*. 2005; **48**(4):752-755
- [124] Cohen G et al. The roles of hyperglycaemia and oxidative stress in the rise and collapse of the natural protective mechanism against vascular endothelial cell dysfunction in diabetes. *Archives of Physiology and Biochemistry*. 2007; **113**(4-5):259-267
- [125] Du X et al. Inhibition of GAPDH activity by poly(ADP-ribose) polymerase activates three major pathways of hyperglycemic damage in endothelial cells. *The Journal of Clinical Investigation*. 2003; **112**(7):1049-1057
- [126] Jarajapu YP, Grant MB. The promise of cell-based therapies for diabetic complications: Challenges and solutions. *Circulation Research*. 2010; **106**(5):854-869
- [127] Tepper OM et al. Human endothelial progenitor cells from type II diabetics exhibit impaired proliferation, adhesion, and incorporation into vascular structures. *Circulation*. 2002; **106**(22):2781-2786
- [128] Ignarro LJ et al. Endothelium-derived relaxing factor produced and released from artery and vein is nitric oxide. *Proceedings of the National Academy of Sciences of the United States of America*. 1987; **84**(24):9265-9269
- [129] Ignarro LJ et al. Endothelium-derived relaxing factor from pulmonary artery and vein possesses pharmacologic and chemical properties identical to those of nitric oxide radical. *Circulation Research*. 1987; **61**(6):866-879
- [130] Furchgott RF, Martin W. Interactions of endothelial cells and smooth muscle cells of arteries. *Chest*. 1985; **88**(4 Suppl):210S-213S
- [131] Furchgott RF, Vanhoutte PM. Endothelium-derived relaxing and contracting factors. *The FASEB Journal*. 1989; **3**(9):2007-2018
- [132] Beller CJ et al. Activation of the peroxynitrite-poly(adenosine diphosphate-ribose) polymerase pathway during neointima proliferation: A new target to prevent restenosis after endarterectomy. *Journal of Vascular Surgery*. 2006; **43**(4):824-830
- [133] Gero D, Szabo C. Role of the peroxynitrite-poly (ADP-ribose) polymerase pathway in the pathogenesis of liver injury. *Current Pharmaceutical Design*. 2006; **12**(23): 2903-2910
- [134] Radovits T et al. The peroxynitrite decomposition catalyst FP15 improves ageing-associated cardiac and vascular dysfunction. *Mechanisms of Ageing and Development*. 2007; **128**(2):173-181

- [135] Alp NJ, Channon KM. Regulation of endothelial nitric oxide synthase by tetrahydrobiopterin in vascular disease. *Arteriosclerosis, Thrombosis, and Vascular Biology*. 2004; **24**(3):413-420
- [136] Pannirselvam M et al. Cellular basis of endothelial dysfunction in small mesenteric arteries from spontaneously diabetic (db/db $-/-$) mice: Role of decreased tetrahydrobiopterin bioavailability. *British Journal of Pharmacology*. 2002;**136**(2):255-263
- [137] Pieper GM. Acute amelioration of diabetic endothelial dysfunction with a derivative of the nitric oxide synthase cofactor, tetrahydrobiopterin. *Journal of Cardiovascular Pharmacology*. 1997;**29**(1):8-15
- [138] Szabo C. Hydrogen sulfide, an enhancer of vascular nitric oxide signaling: Mechanisms and implications. *American Journal of Physiology. Cell Physiology*. 2017;**312**(1):C3-C15
- [139] Hosoki R, Matsuki N, Kimura H. The possible role of hydrogen sulfide as an endogenous smooth muscle relaxant in synergy with nitric oxide. *Biochemical and Biophysical Research Communications*. 1997;**237**(3):527-531
- [140] Coletta C et al. Hydrogen sulfide and nitric oxide are mutually dependent in the regulation of angiogenesis and endothelium-dependent vasorelaxation. *Proceedings of the National Academy of Sciences of the United States of America*. 2012;**109**(23):9161-9166
- [141] Tang WH, Martin KA, Hwa J. Aldose reductase, oxidative stress, and diabetic mellitus. *Frontiers in Pharmacology*. 2012;**3**:87
- [142] Grewal AS et al. Updates on aldose reductase inhibitors for management of diabetic complications and non-diabetic diseases. *Mini Reviews in Medicinal Chemistry*. 2016;**16**(2):120-162
- [143] Kagan VE et al. Mitochondrial targeting of electron scavenging antioxidants: Regulation of selective oxidation vs random chain reactions. *Advanced Drug Delivery Reviews*. 2009;**61**(14):1375-1385
- [144] Apostolova N et al. Mitochondria-targeted antioxidants as a therapeutic strategy for protecting endothelium in cardiovascular diseases. *Current Medicinal Chemistry*. 2014;**21**(25):2989-3006
- [145] Murphy MP. Targeting lipophilic cations to mitochondria. *Biochimica et Biophysica Acta*. 2008;**1777**(7-8):1028-1031
- [146] Frantz MC, Wipf P. Mitochondria as a target in treatment. *Environmental and Molecular Mutagenesis*. 2010;**51**(5):462-475
- [147] Chacko BK et al. Prevention of diabetic nephropathy in Ins2(+/-)(-)(Akita) mice by the mitochondria-targeted therapy MitoQ. *The Biochemical Journal*. 2010;**432**(1):9-19
- [148] Shahzad K et al. Nlrp3-inflammasome activation in non-myeloid-derived cells aggravates diabetic nephropathy. *Kidney International*. 2015;**87**(1):74-84

- [149] Qi H et al. Glomerular endothelial mitochondrial dysfunction is essential and characteristic of diabetic kidney disease susceptibility. *Diabetes*. 2017;**66**(3):763-778
- [150] Kanwar M et al. Oxidative damage in the retinal mitochondria of diabetic mice: Possible protection by superoxide dismutase. *Investigative Ophthalmology & Visual Science*. 2007;**48**(8):3805-3811
- [151] Wagner BK et al. Large-scale chemical dissection of mitochondrial function. *Nature Biotechnology*. 2008;**26**(3):343-351
- [152] Wang D et al. A small molecule promotes mitochondrial fusion in mammalian cells. *Angewandte Chemie (International Ed. in English)*. 2012;**51**(37):9302-9305
- [153] Andreux PA, Houtkooper RH, Auwerx J. Pharmacological approaches to restore mitochondrial function. *Nature Reviews. Drug Discovery*. 2013;**12**(6):465-483
- [154] Rovira-Llopis S et al. Mitochondrial dynamics in type 2 diabetes: Pathophysiological implications. *Redox Biology*. 2017;**11**:637-645
- [155] Reddy PH. Inhibitors of mitochondrial fission as a therapeutic strategy for diseases with oxidative stress and mitochondrial dysfunction. *Journal of Alzheimer's Disease*. 2014;**40**(2):245-256
- [156] Orr AL et al. Suppressors of superoxide production from mitochondrial complex III. *Nature Chemical Biology*. 2015;**11**(11):834-836
- [157] Orr AL et al. Inhibitors of ROS production by the ubiquinone-binding site of mitochondrial complex I identified by chemical screening. *Free Radical Biology & Medicine*. 2013;**65**:1047-1059
- [158] Jung HJ et al. Terpestacin inhibits tumor angiogenesis by targeting UQCRB of mitochondrial complex III and suppressing hypoxia-induced reactive oxygen species production and cellular oxygen sensing. *The Journal of Biological Chemistry*. 2010;**285**(15):11584-11595
- [159] Safar MM, Abdelsalam RM. H₂S donors attenuate diabetic nephropathy in rats: Modulation of oxidant status and polyol pathway. *Pharmacological Reports*. 2015;**67**(1):17-23
- [160] Si YF et al. Treatment with hydrogen sulfide alleviates streptozotocin-induced diabetic retinopathy in rats. *British Journal of Pharmacology*. 2013;**169**(3):619-631
- [161] Viollet B et al. Cellular and molecular mechanisms of metformin: An overview. *Clinical Science (London, England)*. 2012;**122**(6):253-270
- [162] Doughan AK, Harrison DG, Dikalov SI. Molecular mechanisms of angiotensin II-mediated mitochondrial dysfunction: Linking mitochondrial oxidative damage and vascular endothelial dysfunction. *Circulation Research*. 2008;**102**(4):488-496
- [163] Skalska J et al. Antidiabetic sulphonylureas activate mitochondrial permeability transition in rat skeletal muscle. *British Journal of Pharmacology*. 2005;**145**(6):785-791

- [164] Colca JR et al. Identification of a mitochondrial target of thiazolidinedione insulin sensitizers (mTOT)—Relationship to newly identified mitochondrial pyruvate carrier proteins. *PLoS One*. 2013;**8**(5):e61551
- [165] Lois N et al. Endothelial progenitor cells in diabetic retinopathy. *Frontiers in Endocrinology (Lausanne)*. 2014;**5**:44
- [166] Sukmawati D, Tanaka R. Introduction to next generation of endothelial progenitor cell therapy: A promise in vascular medicine. *American Journal of Translational Research*. 2015;**7**(3):411-421
- [167] Ye L, Poh KK. Enhancing endothelial progenitor cell for clinical use. *World Journal of Stem Cells*. 2015;**7**(6):894-898
- [168] Cappellari R et al. Plerixafor improves the endothelial health balance. The effect of diabetes analysed by polychromatic flow cytometry. *Atherosclerosis*. 2016;**251**:373-380
- [169] Santos R et al. A comprehensive map of molecular drug targets. *Nature Reviews. Drug Discovery*. 2017;**16**(1):19-34
- [170] Hopkins AL, Groom CR. The druggable genome. *Nature Reviews. Drug Discovery*. 2002;**1**(9):727-730