

Transforming Sexual Health services: Innovation, integrating terrestrial and e-service clinical provision and supporting collaborative commissioning across London.

Janette Clarke ^{1,2} Jonathan O'Sullivan ² Martin Murchie ^{2,3} and Mark Wall ²
¹ Leeds Teaching Hospitals Trust, ² London Sexual Health, ³ Sandyford Initiative, Glasgow

Re-inventing London Sexual Health services 2014-18

- A partnership group of London Boroughs – London Sexual Health (LSH) was formed in 2014 to evaluate and re-design services to deliver the best service outcomes while making best use of resources. Boroughs clustered into 7 sub-regions to strengthen local service collaboration within the overall governance structure. Of 33 participating boroughs (all sovereign bodies), 31 collaborate in LSH and 27 in e-service development.

The Shared Vision

- Development of an online triage, advice and signposting service, with the facility to order self-sampling kits for HIV and STIs where clinically appropriate.
- New locally procured face to face services all working to a single integrated clinical specification for specialist contraception and STI services and an agreed set of tariff prices.
- Access increased; new technology utilised; clinic time freed up for complex and vulnerable cases and the system streamlined with better value and improved information.

The Programme developed three workstreams:

E-service

- To develop and provide a new pan London e-services model for sexual health; to better signpost patients to the right services and to provide home testing kits where clinically justified.
- Joint procurement and funding by 27 boroughs led to the launch of a pan-London clinical e-service in January 2018. Service specification includes self sampling for chlamydia, gonorrhoea, HIV and syphilis, supplemented by Hepatitis B and C screening where appropriate. Treatment and partner management of uncomplicated genital chlamydia is also offered. We estimate that up to 44,000 tests will be done through the new electronic service in 18/19 rising to over 218,000 tests per year by 20/21.

Integrated Services

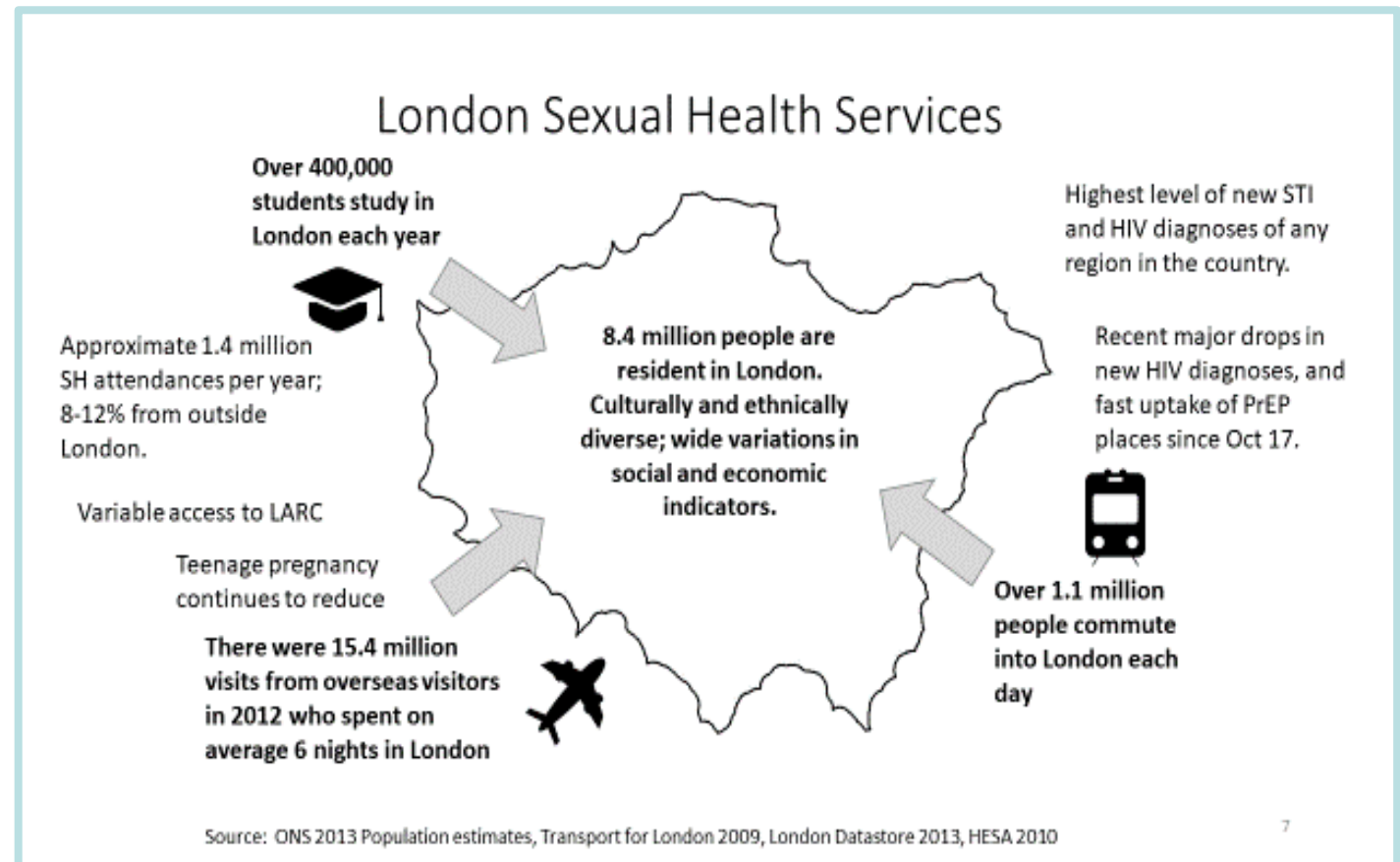
- To facilitate sub-regional groups to re-commission face to face services supporting overall system transformation objectives. The programme agreed a pan London clinical specification for integrated sexual and reproductive health services based on best practice guidelines developed through a central clinical advisory group. Terrestrial services specifications were required to integrate with the e-service, offering service users options for self management, more choice and better access to STI screening.

Integrated Tariff

- To develop and expand a new tariff mechanism that supports flexibility and planning and ensures services are paid for fairly according to clinical need.
- Integrated sexual health tariffs, based on national clinical coding definitions, are agreed across the programme.

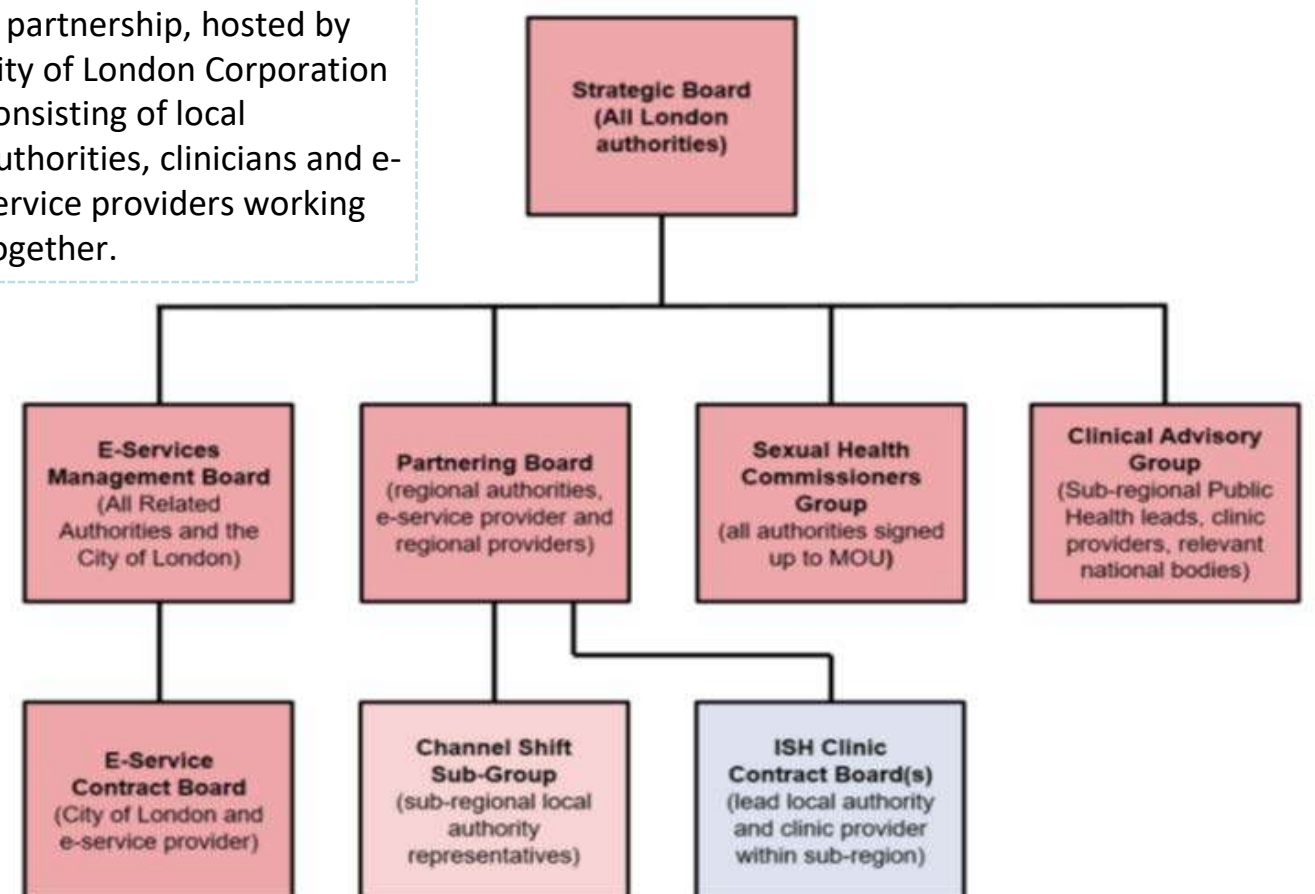


Summary of needs:



London Sexual Health Governance Structure

A partnership, hosted by City of London Corporation consisting of local authorities, clinicians and e-service providers working together.



Impact of collaborative commissioning

- Efficiencies in the commissioning process
- Robust clinical and commissioner governance structure across London (see diagram above)
- Mechanisms developing for evaluation and introduction of new technology and modified practice across London. Independent academic evaluation via NIHR commencing.

Now embedding the new integrated service models and governance programmes:

- Channel shift to online services in partnership with clinics ongoing.
- New networks of hub and satellites across sub-regions providing integrated services
- Integrated sexual health tariff operational.

Contact: Jan Clarke
 jclarke@doctors.org.uk